

# 2024 SUMMER

WORKFORCE  
Continuing Education



## COURSE SCHEDULE



**INSIDE:**  
Page 8

### Become a Park Ranger!

Protect our national treasures

### CLASS LISTINGS

- 3** Professional Licensure
- 4** Personal Enrichment
- 6** College & Career Readiness
- 12** Small Business Center
- 14** Workforce Education
- 20** Public Safety Training
- 24** Heritage Arts

 **Southwestern**  
COMMUNITY COLLEGE

828.339.4426

[www.SouthwesternCC.edu/continuing-education](http://www.SouthwesternCC.edu/continuing-education)

# GENERAL INFORMATION

## CONTACT INFORMATION

Toll Free Number	1.800.447.4091
General Information	339.4426
College & Career Readiness	339.4272
Defensive Driving	339.4426
Emergency Medical Services	306.7044 <b>OR</b> 306.7053
English Language(ESL)/Civics	339.4620
Fire and Rescue	306.7045
GED & HiSet Testing	339.4486
Heritage Arts	366.2005
Human Resources Development	366.2023
Law Enforcement	306.7043 <b>OR</b> 306.7046
Job & Career Preparation	366.2023
Motorcycle Rider	306.7041 <b>OR</b> 306.7040
Nursing Assistant	339.4459
Personal Enrichment	366.2005
Professional Licensure	339.4425
Small Business Center	339.4211 <b>OR</b> 339.4426
STWD Scholarship Info	339.4425
Transcripts	339.4206
Workforce Education	339.4425

## REFUND POLICY

Registration fee refunds are granted only under the following circumstances:

- A student who officially withdraws from an extension class(es) prior to the first class meeting shall be eligible for a 100 percent refund. Also, a student is eligible for a 100-percent refund if an applicable class is canceled.
- After the respective class begins a 75-percent refund shall be made upon the request of the student if the student officially withdraws from the class prior to or on the 10-percent point of the scheduled hours of the class. Note: This rule is applicable regardless of the number of times the class meets or the number of hours the class is scheduled to meet.
- A 100-percent refund shall be made if the student officially withdraws from a contact hour class prior to the first day of class of the academic semester or term or if the college cancels the class. A 75-percent refund shall be made if the student officially withdraws from a contact hour class on or before the tenth calendar day of the class.
- **Self-supporting classes are not eligible for refunds.**

## CONTINUING EDUCATION CREDIT

For occupational extension classes, Continuing Education Units (CEUs) are allowed. One CEU may be given for each 10 contact hours of participation in class.

## WEBSITE

Visit [www.SouthwesternCC.edu/continuing-education](http://www.SouthwesternCC.edu/continuing-education) for more information on classes.

## DISCLAIMER

The classes presented in this publication should not be considered a contract between SCC and any student. Changes or errors may occur for various reasons. A minimum number of students may be required before a class can be conducted. Pre-registered students will be contacted if changes or class cancellation is necessary.

Please visit [www.SouthwesternCC.edu/continuing-education](http://www.SouthwesternCC.edu/continuing-education) for the most current class schedule.

## REGISTRATION FEES

Registration fees are due at the time of registration. Students are not enrolled until all registration fees are paid. Registration fees, supplies fees, technology fees, insurance fees, and book fees, if required, are listed with each course listing.

## ELIGIBILITY

Admission is open to adults who are at least 18 years old and who are not enrolled in public school. 16-18 year olds may enroll in some courses. Students under 18 years of age may enroll in summer classes specifically for the younger student. Only individuals who have registered and paid may attend class.

## Safe Driving Program

Have you received a minor traffic citation or ticket recently? If you have, you may be eligible to complete a four-hour defensive driving course. By completing the course, drivers could save money on their insurance, keep points off their licenses and sharpen their driving skills.

### For more information:

[www.SouthwesternCC.edu/dd](http://www.SouthwesternCC.edu/dd)  
or call 828.339.4426.

Southwestern Community College is accredited by the Southern Association of Colleges and Schools Commission on Colleges to award associate degrees. Contact the Commission on Colleges at 1866 Southern Lane, Decatur, Georgia 30033-4097 or call 404.679.4500 for questions about the accreditation of Southwestern Community College.

### Identification Statement:

An Equal Opportunity Institution • Printed April 2024. Issue 2  
447 College Drive, Sylva, NC 28779  
50,000 copies of this publication were printed at a cost of 18¢ each.  
SCC sells ads in its class schedules to help offset printing costs.  
For advertising information, please contact us at 828.339.4000.  
Distributed free, published 3 times a year.

# PROFESSIONAL LICENSURE

**Contact:** Latresa Shuler, 828.339.4425 or ldowns@SouthwesternCC.edu.  
**Registration:**  
www.SouthwesternCC.edu/workforce-innovations/professional-licensure

## MOTOR VEHICLES

### NC Auto Safety Inspection Certification

**Course Code:** DMV-3129

**Course Hours:** 8

**Cost:** \$70

**Location:** Jackson Campus, Summit, room 129

**Dates/Times:**

M,T • June 24 - 25 • 6 - 10P

M,T • July 22 - 23 • 6 - 10P

M,T • Aug. 26 - 27 • 6 - 10P

M,T • Sept. 23 - 24 • 6 - 10P

**Instructor:** W. Rowland

This course covers the inspection rules and procedures of a public inspection station. Upon completion, a student should understand the rules, regulations and procedures for safety inspections, be able to properly perform a vehicle safety inspection, and be prepared to sit for the state certification exam.

## NOTARY

### Notary Public Education

**Course Code:** LEX-3874 • **Course Hours:** 9

**Cost:** \$70

**Instructor:** P. Parker

**Location:** Jackson Campus, Balsam Center, room 323B

T • June 4 • 9A - 6:30P

T • July 9 • 9A - 6:30P

T • Aug. 6 • 9A - 6:30P

T • Sept. 10 • 9A - 6:30P

**Location:** Macon Campus, Cecil Groves Center, room 107

T • June 18 • 9A - 6:30P

T • July 23 • 9A - 6:30P

T • Aug. 13 • 9A - 6:30P

T • Sept. 17 • 9A - 6:30P

This course covers the qualifications, procedures and certification for becoming a notary. Requirements: high school diploma or GED, at least 18 years of age, legal resident of the USA. Bring current valid state, federal, or tribal photo ID to class. Before class, students must purchase and read through the 2016 Notary Public Guidelines for North Carolina, available in the SCC Bookstore or online through the UNC-CH School of Government.

• THE NEW • STANDARD  
FOR • 5-STAR SERVICE

**WARD**<sup>TM</sup>  
PLUMBING • HEATING • AIR

EST. 1977

OVER 1,600  
5-STAR REVIEWS!  
Google

**WardPH.com**

**(828) 586-WARD**

**LOOK**  
*What's Available*

**“ME”**

For information on advertising  
in this product call your  
*Smoky Mountain News*  
Sales Representative.

AMANDA BRADLEY • **828.273.2208**  
AMANDA.B@SMOKYMOUNTAINNEWS.COM

GREG BOOTHROYD • **828.452.4251**  
ADS@SMOKYMOUNTAINNEWS.COM

MADDIE WOODARD • **828.276.6091**  
MADDIE.W@SMOKYMOUNTAINNEWS.COM



# PERSONAL ENRICHMENT

**For more details, please visit** - [www.SouthwesternCC.edu/workforce-innovations/personal-enrichment](http://www.SouthwesternCC.edu/workforce-innovations/personal-enrichment)  
**Call or email for more information** - Jeff Marley 828.366.2005 or [j\\_marley@SouthwesternCC.edu](mailto:j_marley@SouthwesternCC.edu)

## BEVERAGE

### **Wine Tasting** *Self-Supporting*

**Course Code:** CSP 4000 • **Course Hours:** 2

**Cost:** \$22/Cost of materials included

**Location:** Jackson Campus, Bradford Hall

**Dates/Times:** M • May 20 **OR** June 17 • 6 - 8P

**Instructor:** W. Dunn

Learn about the different types and varieties of red wine, including how they are made and how to pair with meals. Each class will feature a unique selection of wines, some may be featured more than once for comparison. History and health benefits will be discussed.

## CREATIVE WRITING

### **Intro to Creative Writing** *Self-Supporting*

**Course Code:** CSP 4000 • **Course Hours:** 6

**Cost:** \$50/Cost of materials included

**Location:** Jackson Campus, Burrell Building, room 307

**Dates/Times:** M • May 13 - June 3 • 5:30 - 7P

**Instructor:** T. Perdue

Have you ever wanted to write a story but felt you didn't know where to start? In this 4-session class, we will explore all the basic aspects of writing a fictional short story. We will discuss how to generate story ideas, how to take them from idea to draft and from draft to finished product. By the end of the class, you will have a completed short story and the knowledge to continue your writing journey.

## HOBBIES

### **Intro to Model Railroading** *Self-Supporting*

**Course Code:** CSP 4000 • **Course Hours:** 2

**Cost:** \$30

**Location:** Swain Center, room 101

**Dates/Times:** M • June 10 • 10A - 12P

**Instructor:** J. Marley

We'll discuss the basics of model railroading, review what you need to get started, and check out two portable layouts built by the instructor.

### **Fencing** *Self-Supporting*

**Course Code:** CSP 4000 • **Course Hours:** 10

**Cost:** \$122/Equipment not provided

**Location:** Macon Campus, room 110

**Dates/Times:** T,Th • May 28 - June 20 • 4 - 5:15P

**Instructor:** J. Marley

This introductory course is designed for people with little or no fencing experience and will provide a good foundation for more advanced techniques. During the course, students will learn the basics of footwork, the rules and techniques for the foil weapon, and how to both direct and referee bouts. Be sure to wear athletic clothing, like sneakers, sweat pants, and t-shirts. Each student will need to purchase foil, a fencing mask, and a fencing jacket.

## KIDS CLASSES

### **Woodcarving & Knife Safety** *Self-Supporting*

**Course Code:** CSP 4000 • **Course Hours:** 3

**Cost:** \$37/Cost of materials included

**Location:** Swain Center, room 102

**Dates/Times:** Th • June 13 • 1 - 4P

**Instructor:** J. Gottlieb

Learn how to use knives safely and effectively to make a selection of cool, useful wooden objects. Ages 12 and up.

### **Baskets for Kids** *Self-Supporting*

**Course Code:** CSP 4000 • **Course Hours:** 3

**Cost:** \$42/Cost of materials included

**Location:** Swain Center, room 102

**Dates/Times:** Th • June 27 • 1 - 4P

**Instructor:** J. Gottlieb

We'll make some clever and useful simple baskets to introduce beginners to the art basket making. Materials will include wild vines and other items found in nature. Ages 10 and up.

### **Primitive Cooking** *Self-Supporting*

**Course Code:** CSP 4000 • **Course Hours:** 3

**Cost:** \$42/Cost of materials included

**Location:** Swain Center, Outdoor Classroom

**Dates/Times:** Th • July 11 • 1 - 4P

**Instructor:** J. Gottlieb

Make delicious snacks and meals the natural way, using the campfire and utensils made from wood, stone, leaves, seashells, etc. Bring your taste buds and your appetite! Ages 10 and up.



Make this summer  
**BRILLIANT!**



# PERSONAL ENRICHMENT

## LANGUAGE & VOICE

### Beginning Spanish

**Course Code:** FLI-3717 • **Course Hours:** 12

**Cost:** \$70

**Location:** Jackson Campus

**Dates/Times:** M • June 3 - July 8 • 6 - 8P

**Instructor:** S. West

This course provides an introduction to understanding, speaking, reading, and writing Spanish. Emphasis is placed on pronunciation, parts of speech, communicative phrases, culture, and skills for language acquisition. Students will have an opportunity to practice with Spanish speakers during class time.

### Kids Sign Language Camp *Self-Supporting*

**Course Code:** CSP 4000 • **Course Hours:** 6

**Cost:** \$47

**Location:** Macon Campus, room 215

**Dates/Times:** M,T,W,Th • June 3- 6 • 10 - 11:30A

**Instructor:** S. Adams

For ages 8 years and up. This course is designed for young students interested in American Sign Language (ASL). Students will learn over 50 signs to use in everyday life. Participants will connect to ASL through activities, games, and lessons. Lessons incorporated are the ASL Alphabet, fingerspelling, greetings, introduction, ASL numbers, basic conversation words/phrases, feelings, colors, and more.

### Adult Sign Language Camp *Self-Supporting*

**Course Code:** CSP 4000 • **Course Hours:** 6

**Cost:** \$47

**Location:** Macon Campus

**Dates/Times:** M,T,W,Th • June 3 - 6 • 1 - 2:30P

**Instructor:** S. Adams

This course is designed for adult students interested in American Sign Language (ASL). Students will learn over 50 signs to use in everyday life. Participants will connect to ASL through activities, games, and lessons. Lessons incorporated are the ASL Alphabet, finger spelling, greetings, introduction, ASL numbers, basic conversation words/phrases, feelings, colors, and more.

### Introduction to Voiceovers *Self-Supporting*

**Course Code:** CSP 4000

**Cost:** \$49

**Location:** Online, On-Demand Class - Call to schedule

**To Register:** j\_marley@southwesterncc.edu or 828.366.2005

Explore the craft of voiceovers! Discover current trends, opportunities and tools you need to find success in this growing remote working industry. Read a real script and receive coaching from your instructor, a professional voice actor, to improve your delivery. One-time, 90-minute, one-on-one, video-chat class! Upon registration you will be contacted to schedule your class for a day and time of your convenience.

## MUSIC

### Instant Piano for Busy People *Self-Supporting*

**Course Code:** CSP 4000 • **Course Hours:** 3

**Cost:** \$69 • **Location:** Online/Zoom

**Dates/Times:** T • June 25 • 6:30 - 9:30P

**Instructor:** C. Coffman

In just a few hours, you can learn enough secrets of the trade to give you years of musical enjoyment. Learn to play piano the way professionals do-using chords. Since this class is being held online with ZOOM you will be able to sit at your piano or keyboard at home and take this course with no pressure at all. And since this course includes an online book and online follow up video lessons, you will be able to continue your practice and study on your own. An optional periodic online question and answer session is also included. A recording of the class is included as well. The course is partly lecture/demonstration and partly hands on instruction.

### Instant Guitar for Busy People *Self-Supporting*

**Course Code:** CSP 4000 • **Course Hours:** 2.5

**Cost:** \$69 • **Location:** Online/Zoom

**Dates/Times:** W • June 26 • 6:30 - 9P

**Instructor:** C. Coffman

Have you ever wanted to learn the guitar but simply find it difficult to find the time? In just a few hours you can learn enough about playing the guitar to give you years of musical enjoyment, and you won't have to take private lessons to do it. This crash course will teach you some basic chords and get you playing along with your favorite songs right away. Since this class is being held online with ZOOM, you will be able to sit at home with your guitar and take this class without any pressure at all. And since the class includes an online book and online follow-up video lessons, you will be able to continue your practice and study on your own. An optional periodic online question and answer session is also included. A recording of the class is included as well.



# College & Career Readiness

CLASSES ARE HELD AT **CONVENIENT TIMES** AND **LOCATIONS** EACH WEEK TO MEET THE NEEDS OF ADULTS WITH BUSY LIVES.

## High School Equivalency

Prepare for the HSE exam (GED® or HiSet)

### Available study options:

- In-person classes
- Online

### Contact:

Heather Stephan

📞 828.339.4272

✉️ h\_stephan@SouthwesternCC.edu

## Career Readiness Prep

Prepare for future employment

### Available study options:

- In-person classes
- Online

### Contact:

Sylvia Smoker

📞 828.339.4477

✉️ a\_smoker@SouthwesternCC.edu

# Learn ENGLISH

- Learn reading, writing and conversation skills in English
- Train for a career or gain workplace skills
- Join at any level: beginner, intermediate and advanced
- Evening classes are offered in Sylva and Franklin
- Offered to adults only

## GET STARTED TODAY!

Contact Sarah West:

📞 828.339.4620

✉️ s\_west@SouthwesternCC.edu

## Citizen Prep Courses:

- Entrepreneurship
- Medical Terminology

# APRENDE INGLÉS

Aprende habilidades de lectura, escritura y conversación en inglés. Únete a cualquier nivel: principiante, intermedio y avanzado

- Entrena para una carrera o adquiere habilidades laborales
- ¡Las clases son gratuitas!
- Se ofrecen clases nocturnas en Sylva y Franklin
- Ofrecido solo para adultos

Póngase en contacto con Sarah West  
828.339.4620 para inscribirse en las clases.  
Se habla Español



# College & Career Readiness





# NATIONAL PARK SERVICE - PARK RANGER LAW ENFORCEMENT ACADEMY

Have you always loved our National Parks?  
Do you enjoy working outdoors? **We've got the perfect career for you.**



Contact Zach Dezarn for more information at  
828.306.7046 or [z\\_dezarn@SouthwesternCC.edu](mailto:z_dezarn@SouthwesternCC.edu)



# WHY CHOOSE US?

- We are the nation's longest continuously operating NPS Park Ranger training program.
- One of only 6 NPS-PRLEA training programs in the country!
- We have long been a trailblazer at expanding the depth of training offered for future Park Rangers.
- Many states across the U.S. accept our certification for their State Park Rangers.



Contact Zach Dezarn for more information at  
828.306.7046 or [z\\_dezarn@SouthwesternCC.edu](mailto:z_dezarn@SouthwesternCC.edu)



# TABLE GAMING

In less than **three months**, you'll be fully trained to work on the casino floor!

See page 14 for more info.



- **FUN & ACTION-PACKED**
- **One of the HIGHEST-PAID PROFESSIONS in our area**
- **You could be eligible to have your TUITION FEES COMPLETELY COVERED!**







Discover your

next adventure.

At Western Carolina, your education is more than what happens in the classroom.

It's the wonder inspired by your place in the mountains and the self-discovery encouraged by your professors and peers.



Explore more at  
[livewestern.wcu.edu](http://livewestern.wcu.edu)

**Western**  
**Carolina**  
UNIVERSITY

# SMALL BUSINESS CENTER

Southwestern Community College's Small Business Center (SBC) is proud to serve startup and existing small business owners with complimentary seminars, counseling, and a resource center. As part of a network of experienced SBC's across North Carolina, we're dedicated to helping small businesses grow and succeed. Our SBC understands the unique challenges that local businesses encounter, and we're ready to offer professional advice and training.

For more information about your local SBC, to reserve your seat, or to request one-on-one confidential counseling, visit [www.SouthwesternCC.edu/SBC](http://www.SouthwesternCC.edu/SBC) or contact us at **828.339.4426**. There is no charge for these seminars and pre-registration is required. All classes are virtual unless specified.

## General Business Seminars

### **Budgeting Blunders and Beauties - How to Win the Fight with Your Business**

W May 22 12 - 1:15P Sequoyah Fund

### **Make a Business Offer That Can't be Refused**

W May 29 12 - 1:15P Sequoyah Fund

### **How to TikTok**

W June 5 12 - 1P tenBiz

### **Find Out Who Your Best Customers Are and Hit the Marketing Bullseye**

W June 5 12 - 1:15P Sequoyah Fund

### **Tell Your Story to Influence Buyers**

W June 12 12 - 1:15P Sequoyah Fund

### **Building a Brand that People will Remember**

W June 19 12 - 1:15P Sequoyah Fund

### **How to Price Your Product or Service**

W June 26 12 - 1:15P Sequoyah Fund

### **Marketing Magic: Essential Marketing Maneuvers**

W July 3 12 - 1P tenBiz

### **Are You Ready to be an Entrepreneur?**

W July 3 12 - 1:15P Sequoyah Fund

### **Pulling Back the Curtain on Small Business Lending - What You Need to Know**

W July 10 12 - 1:15P Sequoyah Fund

### **Using Relationships to Grow Your Business**

W July 17 12 - 1:15P Sequoyah Fund

### **Grant Writing**

Th July 18 1 - 3P TenBiz

### **Overcoming the Fear of Becoming Your Own Boss**

W July 24 12 - 1:15P Sequoyah Fund

### **Excel for Your Business**

W July 24 10A - 12P tenBiz

### **Creating a Business Budget and Sticking to It**

W July 31 12 - 1:15P Sequoyah Fund

### **Choosing the Right Legal Structure**

M Aug. 5 1 - 3P tenBiz

### **Bold Branding: Make Your Business Memorable**

W Aug. 7 12 - 1P tenBiz

### **Knowing Your Small Business Resources**

W Aug. 7 12 - 1:15P Sequoyah Fund

### **Managing Balance and Burnout in Your Business to Keep Your Head Above Water**

W Aug. 14 12 - 1:15P Sequoyah Fund



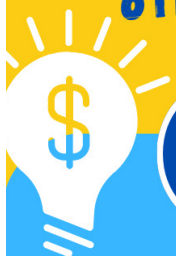
# SMALL BUSINESS CENTER



# BE A 'TREP'

Celebrating Youth  
ENTREPRENEURSHIP

FUN & CREATIVE  
SUMMER CAMP FOR RISING  
6TH - 9TH GRADERS



Week Of  
**JULY 8-11**

From  
**9AM-3 PM**  
MONDAY-THURSDAY

Location  
**SCC SYLVA  
CAMPUS**

## Activities

- ✓ Learn how to turn an idea or passion into a product or business
- ✓ Meet and learn from real entrepreneurs
- ✓ Create and develop business ideas in a fun environment
- ✓ Pitch a business idea to a panel of judges
- ✓ Make new friends

**\$50**

Register in  
person by  
**June 15**

**For More Information  
and to Register**

Marne Harris - 828-339-4426  
m\_harris@southwesterncc.edu





# WORKFORCE EDUCATION

**Pre-register/Registration:** Latresa Shuler, 828.339.4425 or ldowns@SouthwesternCC.edu.

## Phlebotomy

**Course Code:** PBT 3022

**Location:** Jackson Campus, Health Sciences, room 316

**Class Dates & Times:** M,W • April 8 - May 22 • 4 - 7P

**Clinical Dates & Times:** M,T,W,Th • May 27 - July 18 • 8A - 4:30P

**Cost:** \$180 + Textbook, insurance, supplies, background check, uniforms, ID Badge and immunizations, etc. (approx.\$360)

**Instructor:** B. Kirchman

This course provides theory and clinical experiences needed for the proper collection of blood and other specimens used for diagnostic testing.

## Real Estate Pre-Licensing

**Course Code:** RLS 3700 • **Course Hours:** 88

**Location:** Jackson Campus, Burrell Building, room 303

**Dates & Times:** M,W • May 20 - July 31 • 5:30 - 9:30P

**Cost:** \$180 + Textbooks

This course meets the educational requirement for the North Carolina real estate broker license. It prepares you to pass the real estate broker examination administered by the N.C. Real Estate Commission (NCREC). Topics include basic real estate principles and practices, law and contracts, financing, closing, valuation, fair housing, property management, taxation and math. Additional topics include land use, insurance, real estate license laws, rules and regulations.

## DEFENSIVE DRIVING COURSES

**Course Code:** SEF 3001 • **Course Hours:** 4

This course will motivate drivers to change their behind-the-wheel behaviors and attitudes. It will give them key understanding, skills & techniques to avoid collisions and reduce future violations. Open to individuals or businesses wanting to increase their awareness of roadway safety.

**4 HOUR CLASS DATES** *Self-Supporting*

**Cost: \$75 (CASH-ONLY)**

**Location:** Jackson Campus, Founders Hall, room 125

**Location:** Macon Campus, room 204

**Dates & Times:** Call for dates.

**8-Hour DDC** *Self-Supporting*

**Course Code:** SEF 3001 • **Course Hours:** 8

You **MAY** be eligible for this course if your traffic citation is for careless and reckless - 20-141.6, speeding in a school zone - 20-141.1, speeding in a work zone - 20-141 (j2) or speeding more than 20 mph over posted speed limit. The DDC-ADD class must be completed within the time ordered by the court. **\*MUST** have written permission from the Office of the District Attorney.

\*Completing a DDC class does not guarantee reduction and/or dismissal of any charges.

**8 HOUR CLASS DATES** *Self-Supporting*

**Registration Cost: \$125 (CASH-ONLY)**

**Location:** Jackson Campus, Founders Hall, room 125

**Dates & Times:** Call for dates.

## TABLE GAMES DEALER TRAINING SCHOOL

### Blackjack

**Course Code:** GAM 3001 • **Course Hours:** 190

**Cost:** \$180

SCC, in collaboration with Harrah's Cherokee Casino, is offering certification to help individuals enter the exciting gaming industry. This required certification will teach the individual to proficiently deal the game, know the legal and regulatory aspects of gaming, obtain table management skills, operation of table gaming tools and equipment, etc.

**Location:** Harrah's Cherokee Casino Resort

**Dates & Times:**

M-Th • May 6 - July 9 • 6 - 11P

M-Th • June 17 - Aug. 20 • 11A - 4P

M-Th • July 22 - Sept. 24 • 6 - 11P

M-Th • Sept. 9 - Nov. 12 • 11A - 4P

### Poker Dealer Training

**Course Hours:** 120 • **Cost:** \$180

Proficiently deal Poker game, know the legal and regulatory aspects of gaming, obtain table management skills, operation of table gaming tools and equipment, accuracy and accounting skills, communication with players, customer service aspects of gaming, cheque handling, Open/Closing Table, and understanding the casino industry and tourism environment.

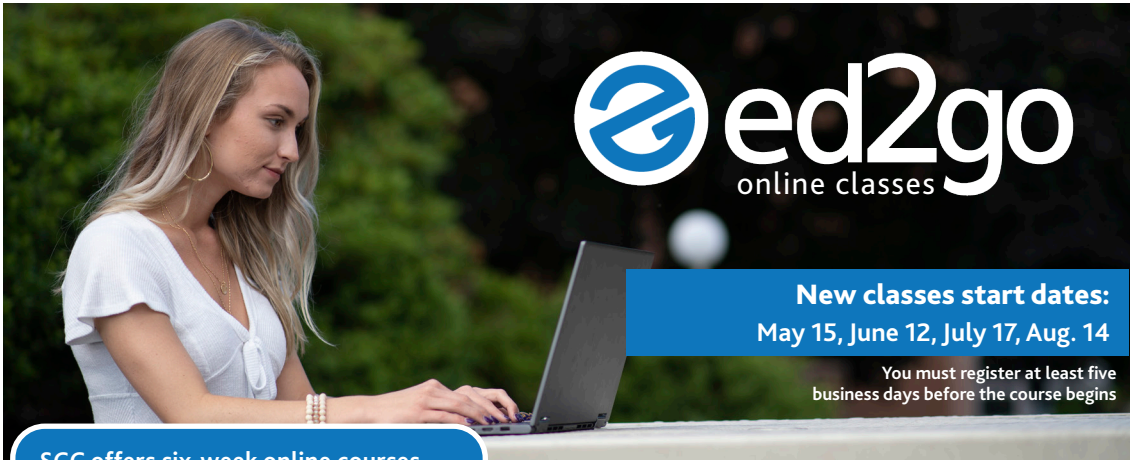
**Location:** Harrah's Cherokee Casino Resort

**Dates & Times:** M-F • June 24 - July 19 • 6P - 12A

M-F • Oct. 21 - Nov. 15 • 12 - 6P



# SCC ONLINE COURSES



SCC offers six-week online courses that provide education and training in a variety of areas! The courses are designed by a team of professionals from each respective field who work to provide you with an effective web-based learning experience. Prior to your course start date, you will receive a reminder e-mail that includes instructions on how to access the classroom website. Courses are hosted on ed2go's learning management system (LMS). Each program includes a set of lessons/modules and evaluations.

When you visit our website, instructions are readily available and easy to follow.

For more information, please contact **Latresa Shuler**

☎ 828.339.4425

✉ ldowns@SouthwesternCC.edu

### Accessing your course classroom:

1. Please visit [www.ed2go.com/scc](http://www.ed2go.com/scc).
2. Once the home page pulls up, please type the course name into the Search for Courses bar at the top of the screen and press enter.
3. When the course description pulls up, please click the red Add to Cart button.
4. Choose your course date from the listing of dates in the "Session Date" drop down menu, and select the Continue to Checkout button.
5. On the next page, if you are a returning student, please enter your email address and password in the appropriate fields. At that point, continue through the steps until you reach the "Checkout" page.
6. If you have never taken an Ed2Go course before, please create a username and password by clicking the link for new students. After creating your username and password, continue through the steps until you reach the "Checkout" page.
7. Please click the "Checkout" button.
8. After clicking the "Checkout" button, you will be taken to a page where you will read through the registration/payment information.
9. You will receive an email from [lshuler@southwesterncc.edu](mailto:lshuler@southwesterncc.edu) with information on how to complete your registration and make a payment for your course. Once this is completed you may click on the "Enter My Classroom" button and begin your course.
10. Write down your username and password in a safe location!
11. On the start date of your course, you will return to the [www.ed2go.com/scc](http://www.ed2go.com/scc) home page, and click on the Classroom link to access your course or courses.

### Course topics include:



Art & **Design**



**Business**



Computer **Applications**



Computer **Science**



Construction & **Trades**



Health & **Fitness**



**Hospitality**



Information **Technology**



**Language**



**Legal**



Math & **Science**



Teacher Professional **Development**



**Test Prep Writing**

# ONLINE WORKFORCE EDUCATION COURSES

**Dates:** Classes start 1<sup>st</sup> Tuesday of each month.  
June 4, July 2, Aug. 6, Sept. 3, Oct. 1, Nov. 5, Dec. 3

**Registration Fee:** \$180

*Students must register five business days before the start date of the class.*

**For more information:** Contact Latresa Shuler at 828.339.4425 or ldowns@SouthwesternCC.edu

## Dental Assisting Part 1

**Course Code:** DEN-3300 • **Course Hours:** 250

This course is designed to teach you the necessary skills to become a Dental Assistant I in the State of N.C. Coursework includes instruction in general studies, biomedical sciences, dental sciences, clinical sciences, and clinical practice. Graduates may be eligible to sit for the Certified Dental Assistant (CDA) exam through the Dental Assisting National Board once all requirements are met, including, 3000 hours of chairside assisting.

## Dental Assisting Part 2

**Course Code:** DEN-3300

**Course Hours:** 150

This continuation of Part 1 includes the completion of Part 1 coursework, prepares the student for success in the health-care field, and includes a clinical externship. Completion of Part 1 is required.

## Medical Administration Assistant Program with Electronic Health Records Office Professional

**Course Code:** OST 3000

**Course Hours:** 260

In this career, individuals play an integral role in the daily operations of physician's offices and hospitals. Throughout this course, students will learn Healthcare Foundational Knowledge and Basic Science, Patient Care Coordination, Computer Fundamentals, Communication and Customer Service, Medical Laws and Ethics, Electronic Medical Records, and Career Success in Healthcare.

## Medical Coding and Billing for Outpatient and Inpatient Services Part 1

**Course Code:** MED 3300

**Course Hours:** 326

This course will include healthcare information management, reimbursement methodologies, biomedical sciences and an introduction to coding. In addition to one-on-one support from experienced instructors during training and access to personalized graduate support, students receive e-books, industry codebooks and access to online references.

## Medical Coding and Billing for Outpatient and Inpatient Services Part 2

**Course Code:** MED 3300

**Course Hours:** 329

This course is a continuation of Part 1 and will include legal compliance, CPT/HCPCS Coding, Advanced ICD-10 Coding, Advanced Anatomy & Physiology and Exam Prep.

## Medical Transcription Editor Part I

**Course Code:** OST 3000

**Course Hours:** 379

This course is the first course in a two-part program designed to teach the student to transfer audio-recorded dictation into hard copy medical documents. Online reference materials, student and technical support, and a one-year help hotline are included in this course offered by SCC in partnership with Career Step.

## Medical Transcription Editor Part II

**Course Code:** OST 3000

**Course Hours:** 251

**Prerequisite:** Online Medical Transcription Editor Part I

Complete the medical transcription editor program! This course is the second in a two-part program designed to teach the student to transfer audio-recorded dictation into hard copy medical documents. The student also will gain the knowledge and skills of speech recognition editing, which will help them produce medical documents that are used by physicians, medical personnel, and courts of law on a daily basis. Online reference materials, student and technical support, personal employment consultations, contracts and pricing guide, referral letters, résumé examples, and a one-year help hotline are included in this course offered by SCC in partnership with Career Step.

## Pharmacy Technician Part I

**Course Code:** PHM 3250

**Course Hours:** 213

This part one of a two-part course that provides curriculum that will prepare a student to find employment (and success) as a pharmacy technician in the health care or retail setting. Emphasis is placed on a variety of duties within the pharmacy environment including: computer fundamentals, basic anatomy, pharmacology, pharmacy law, regulations and standards, pharmacy calculations and prescriptions.

## Pharmacy Technician Part II

**Course Code:** PHM 3250 • **Course Hours:** 209

This part two of a two-part course that provides curriculum that will prepare a student to find employment as a pharmacy technician in the health care or retail setting. Emphasis is placed on community pharmacy practice, institutional pharmacy practice, virtual pharmacy labs, final exam prep, and includes a required 130 hour externship.



**balsamwest**

**HIGH-SPEED INTERNET**

**FIBER ♦ WIRELESS ♦ VOICE ♦ DATA CENTER**

**YOUR LOCAL INTERNET SERVICE PROVIDER**

888.225.7266

**BALSAMWEST.NET**



# ONLINE WORKFORCE EDUCATION COURSES

**Pre-register/Registration:** Scott Sutton, 828.339.4296 or scottss@SouthwesternCC.edu.

## **NORTH CAROLINA INSURANCE PRE-LICENSING**

SCC offers a variety of Pre-Licensing classes that include: Life, Health, Medicare Supplement/Long Term Care, Property, Casualty, Personal Lines and Adjuster.

### **NCDOL Policy**

Insurance producers obtaining their insurance license for the first time will be required to be fingerprinted prior to receiving their insurance license. The licenses that will be affected include: life, health, accident and sickness, property, and casualty.

## **INSURANCE PRE-LICENSING**

### **Life Insurance Only**

**Course Code:** INS 3121

**Course Hours:** 20

**Cost:** \$205 (\$70 registration fee and \$135 non-refundable materials and book fee)

This course is designed to prepare students for the North Carolina State Life Insurance Agents Examination.

### **Health (Health and Accident or Sickness) Only**

**Course Code:** INS 3122

**Course Hours:** 20

**Cost:** \$205 (\$70 registration fee and \$135 non-refundable materials and book fee)

This course is designed to prepare students for the North Carolina State Health and Accident or Sickness Insurance Agents Examination.

### **Property Insurance Pre-licensing**

**Course Code:** INS 3129

**Course Hours:** 20

**Cost:** \$205 (\$70 registration fee and \$135 non-refundable materials and book fee)

This course is designed to prepare students for the North Carolina State Property Insurance Agents Examination.

### **Life/Health (Health and Accident or Sickness) Insurance**

**Course Code:** INS 3385

**Course Hours:** 40

**Cost:** \$345 (\$125 registration fee and \$220 non-refundable materials and book fee)

This course is designed to prepare students for the North Carolina State Life and Health and Accident or Sickness Insurance Agents Examinations.

### **Medicare Supplement and Long-Term Care**

**Course Code:** INS 3128

**Course Hours:** 10

**Cost:** \$170 (\$70 registration fee and \$100 non-refundable materials and book fee)

This course is designed to prepare students for the North Carolina State Medicare Supplement/Long-Term Care Insurance Agents Examination. Prereq: Health (Health and Accident or Sickness) course.

### **Casualty Insurance Pre-licensing**

**Course Code:** INS 3129

**Course Hours:** 20

**Cost:** \$205 (\$70 registration fee and \$135 non-refundable materials and book fee)

This course is designed to prepare students for the North Carolina State Casualty Insurance Agents Examination.

### **Property and Casualty Insurance Pre-licensing**

**Course Code:** INS 3129

**Course Hours:** 40

**Cost:** \$345 (\$125 registration fee and \$220 non-refundable materials and book fee)

This course is designed to prepare students for the North Carolina State Property and Casualty Insurance Agents Examinations.

### **Self-Employed Adjuster Pre-licensing**

**Course Code:** INS 3127

**Course Hours:** 40

**Cost:** \$345 (\$125 registration fee and \$220 non-refundable materials and book fee)

This course is designed to prepare students for the North Carolina State Property and Liability Adjuster Examination.

### **Personal Lines**

**Course Code:** INS 3129

**Course Hours:** 20

**Cost:** \$345 (\$125 registration fee and \$220 non-refundable materials and book fee)

This course is designed to prepare students for the NC State Personal Lines Insurance Agents Examination. The difference between this course and Property/Casualty is that this course does NOT include the Commercial Section.

### **Insurance Pre-Licensing-"Live" Distance Learning Webinar (Synchronous)**

The webinar is a live-synchronous class taught on the computer using the platform "Zoom." The class is designed like an in-person class but on the computer on specific dates and times. The following courses are offered:

#### **• Property & Casualty**

**Course Code:** INS-3129

**Dates & Times:** M - F • May 9 - 13 OR May 23 - 27 OR July 8 - 12 OR July 22 - 26 OR Aug. 5 - 9 OR Aug. 19 - 23 • 8A - 5:30P

#### **• Life & Health**

**Course Code:** INS-3121 & INS-3122

**Dates & Times:** M - F • May 16 - 20 OR July 15 - 19 OR Aug. 12 - 16 • 8A - 5:30P

#### **• Medicare Supplement/Long-Term Care**

**Course Code:** INS-3128

**Dates & Times:** Th, F • May 26 - 27 OR July 25 - 26 • Th - 8A - 5:30P, F - 8A - 12P

**\*\*To participate in the program, NCDOL requires class attendance during the entire scheduled time, no excuses. Students must have access to the internet and a computer.\*\***

TRIBAL  
EMPLOYMENT  
RIGHTS OFFICE  
(T.E.R.O.)



# FACILITIES MAINTENANCE TRAINING

**FREE for enrolled members of the Eastern Band of Cherokee Indians (EBCI).**

To help address expanding workforce needs of the Qualla Boundary, Southwestern Community College will be offering a Facilities Maintenance Training Program completely free for enrolled members of the Eastern Band of Cherokee Indians (EBCI).

The program is being offered in partnership with the Tribal Employment Right Office (TERO). SCC will provide scholarships to cover registration fees, and TERO is providing tools, supplies and classroom/training space.

EBCI Principal Chief Michell Hicks and Dr. Don Tomas, SCC's President, signed a Memorandum of Understanding for the program on Feb. 5.

Training will cover basic construction, carpentry, electrical, plumbing and building maintenance. Participants will also acquire CPR, Forklift and OSHA-10 certifications.

"Southwestern and the Eastern Band of Cherokee Indians have a very rich history of working together, and this particular program will help fill a tremendous need on the Qualla Boundary," said Dr. Don Tomas, SCC President.

**For more information or to sign up for a future class, contact Latresa Shuler at 828.339.4425 or [ldowns@SouthwesternCC.edu](mailto:ldowns@SouthwesternCC.edu).**

"It's a **great honor** to be able to share this partnership with SCC and our TERO program for the free facilities training program. As an SCC alumnus myself, **I credit this school with helping me** for the last 29 years as a Certified Public Accountant. We have dedicated employees that are wanting to further their training and education in the work force and I'm excited about the working opportunities this will bring to the EBCI."

-- EBCI Principal Chief  
Michell Hicks

# BLET Recruit receives Moses Family Scholarship



Just a few short months after setting up an endowed scholarship fund, retired Macon County Sheriff George Moses and his wife Margaret Moses met the first recipient: Holly Bates of Franklin.

Bates is currently enrolled in Southwestern Community College's Basic Law Enforcement Training program and will soon be entering the profession to which Mr. Moses devoted several decades of his life. Bates plans to serve on the Franklin Police Department.

"It was amazing to meet the former sheriff and his wife," said Bates, who's also in the Army National Guard. "They are wonderful people, and I'm thankful that they set up this scholarship fund. It means a lot to me and is a tremendous help."

Moses served as Macon County's sheriff for two separate terms (1970-74 and 1982-86).

"The George Moses Family Scholarship" will be awarded annually to an aspiring law enforcement officer.

"I knew some of (Bates') relatives years ago," Mr. Moses said. "It means a lot to be able to meet Holly. This is exactly what we're wanting to do, help people go into this profession."

For more information about "The George Moses Family Scholarship", contact Kathy Posey – Institutional Development Associate for the SCC Foundation - at 828.339.4227 or [k\\_posey@SouthwesternCC.edu](mailto:k_posey@SouthwesternCC.edu).





**Fire and Rescue**



**Basic Law Enforcement Training**



**Emergency Medical Services**



# PUBLIC SAFETY TRAINING

The Jerry Sutton Public Safety Training Center (PSTC) is a division of Southwestern Community College. The PSTC is primarily dedicated to coordinating Public Safety Training Programs (EMS, Fire/Rescue and Law Enforcement) to all agencies within the SCC service area and beyond. **Location:** Macon County Industrial Park, Highway 64-West.

## EMERGENCY MEDICAL SERVICES

Pre-registration is required for all EMS certification courses. Courses may be cancelled due to insufficient enrollment.

**Contact:** Eric Hester at  
ehester@SouthwesternCC.edu or 828.339.4277.

**Registration:**  
www.SouthwesternCC.edu/pstc

## AMERICAN HEART ASSOCIATION CLASSES

### BLS for Healthcare Providers

This course is for healthcare professionals who need to know how to perform CPR, as well as other lifesaving skills, in a wide variety of in-hospital and out-of-hospital settings.

### Heartsaver CPR, AED & First Aid

This course is for anyone with limited or no medical training who needs a course completion card in first aid, CPR and AED use to meet job, regulatory or other requirements. (Also available in Spanish - Call for details).

### Advanced Cardiac Life Support & ACLS-EP

This course takes the basics that are learned in BLS and builds them through science based training, designed for Healthcare Personnel.

### Pediatric Advanced Life Support

This class is for the healthcare provider that may interact or respond to incidents with infants and children.

### Bloodborne Pathogens

This course is designed for anyone that stands a reasonable chance of coming into contact with bloodborne pathogens in their work environment. This course is designed to meet OSHA requirements for bloodborne pathogens training when paired with site-specific instruction. - Can be held at an offsite location.

## ACADEMIES

### Emergency Medical Responder

**Dates:** TBD

The primary focus of the Emergency Medical Responder is to initiate immediate lifesaving care to critical patients who access the emergency medical system. This individual possesses the basic knowledge and skills necessary to provide lifesaving interventions while awaiting additional EMS response and to assist higher level personnel at the scene and during transport. The class consists of 116 hours didactic and hands-on patient scenario training.

### Emergency Medical Technician

**Date:** TBD

The primary focus of the Emergency Medical Technician is to provide basic emergency medical care and transportation for critical and emergent patients who access the emergency medical system. This individual possesses the basic knowledge and skills necessary to provide patient care and transportation.

### Emergency Medical Technician - Hybrid Course

**Date:** TBD

**Location:** Room 117/Online

The primary focus of the Emergency Medical Technician is to provide basic emergency medical care and transportation for critical and emergent patients who access the emergency medical system. This individual possesses the basic knowledge and skills necessary to provide patient care and transportation. Emergency Medical Technicians function as part of a comprehensive EMS response, under medical oversight. Emergency Medical Technicians perform interventions with the basic equipment typically found on an ambulance.

### Advanced Emergency Medical Technician

**Date:** TBD

The primary focus of the Advanced Emergency Medical Technician is to provide basic and limited advanced emergency medical care and transportation for critical and emergent patients who access the emergency medical system. This individual possesses the basic knowledge and skills necessary to provide patient care and transportation. This class consists of 199 hours didactic education, clinical education of 60 hours in the hospital setting and 48 hours of field internship at area EMS agencies.

## OTHER OPPORTUNITIES

### EMS Technical Scope of Practice Evaluations

Call for appointment.

### EMS Preceptor Training

Call for appointment.

This course prepares the EMS Preceptor with the knowledge of educational methodology, student learning styles and the roles and responsibilities of both EMS Preceptors and EMS Students affiliated with Southwestern Community College's EMS Programs. Successful completion will empower preceptors to more effectively shape the future of our next generation of EMS Providers while also providing 2 hours of Continuing Education Credits for renewal of provider and/or instructor credentials.



# PUBLIC SAFETY TRAINING

## FIRE AND RESCUE

SCC offers a wide variety of fire and rescue training courses in cooperation with individual fire and rescue departments in Jackson, Macon, Swain Counties and the Qualla Boundary.

**Contact:** Richard McWilliams, 828.306.7045 or r\_mcwilliams@SouthwesternCC.edu.

**Registration:** www.SouthwesternCC.edu/pstc/fire-rescue

### FF Fireground Rescue Ops 1

**Course Hours:** 28

**Date:** May 16 - June 6 • **Location:** Cullowhee Fire Dept.

This course will present the candidate with the knowledge, skills, and ability to satisfy the requirements of NFPA 1001: Standard for Firefighter Professional Qualifications (2019 edition).

### Technical Rescuer Water Block

**Course Code:** FIP 6404

**Course Hours:** 48

**Date:** TBD • **Location:** Cowee Fire Dept.

This Technical Rescuer (TR) Water block course will present the Technical Rescuer with the knowledge, skills, and ability to satisfy the requirements of Chapters 11 and 12 (surface and swift water) of NFPA 1006: Standard for Technical Rescue Professional Qualifications.

### Technical Rescue Series (TR)

**Course Hours:** 120

**Date:** June • **Location:** Cowee Fire Dept.

Individual courses included in this block course are Rescue Operations, Anchors and MAS, Fixed Rope Systems, Health and Wellness, Helicopter Transport, Horizontal Systems, Lowers and Raises, Personal Protective Equipment (PPE), Rescue Equipment, Rope Basics, and Victim Management.

### Fire and Life Safety Initiatives

**Course Code:** FIP 3051

**Course Hours:** 28

**Date:** June 11 - 28 • **Location:** Cullowhee Fire Dept.

This course includes instructional content for Fire Detection & Suppression Systems and Fire and Life Safety Initiatives.

### Traffic Incident Management

**Course Code:** FIP 7000

**Course Hours:** 4

**Date:** July 9

This course is designed to establish the foundation for and promote consistent training of all responders to achieve the three objectives of the Traffic Incident Management (TIM) National Unified Goal: responder safety; safety, quick clearance from incidents; and prompt, reliable, inter-operable communications.

### FF/TR Emergency Medical Care

**Course Code:** FIP 7001

**Course Hours:** 12

**Date:** July 11 - 18 • **Location:** Cullowhee Fire Dept.

This certification-related course is designed to give the candidate a basic understanding of emergency medical care procedures.

### Mayday/Safety and Survival

**Course Code:** FIP 6413

**Course Hours:** 24

**Date:** July 25 - Aug. 13 • **Location:** Cullowhee Fire Dept.

This course includes instructional content for Mayday and FF Safety & Survival.

### Haz-Mat Ops

**Course Code:** FIP 3556

**Course Hours:** 40

**Date:** Aug. 19 - Sept. 14 • **Location:** Cullowhee Fire Dept.

This course is designed to cover initial response objectives to a hazardous materials incident.

## LAW ENFORCEMENT (LETP)

### North Carolina - Basic Law Enforcement Training (NC-BLET)

**Course Code:** CJC-3938

**Course Hours:** 887

**Contact:** Daniel Reid, 828.306.7055 or d\_reid@SouthwesternCC.edu

The North Carolina - Basic Law Enforcement Training course is a state-accredited program designed to prepare entry-level individuals with the cognitive and physical skills to become certified police officers and deputy sheriffs. Upon successful completion of the NCDOJ Commission-mandated course, academy graduates will be eligible for certification for employment as a sworn law enforcement officer within the State of North Carolina. SCC-PSTC-LETP typically schedules two academies (**Spring/Fall**) annually. Applicants are required to meet all required qualifications, including agency sponsorship.

### North Carolina - Detention Officer Certification Training (NC-DOCC)

**Course Code:** CJC-3941

**Course Hours:** 209

**Contact:** Mitch Boudrot, 828.306.7043 or m\_boudrot@SouthwesternCC.edu

This course is a state accredited program designed to prepare entry-level individuals with the cognitive and physical skills for eligibility as certified Detention Officers. SCC-PSTC-LETP typically schedules two academies (**Spring/Fall**) annually. Applicants are required to meet all required qualifications, including agency sponsorship.

# PUBLIC SAFETY TRAINING

## **General Instructor Training (NC-GI)**

**Course Code:** CJC-3928

**Course Hours:** 90

**Contact:** Mitch Boudrot, 828.306.7043 or m\_boudrot@SouthwesternCC.edu

Developed by the North Carolina Justice Academy (NCJA) in 1975, the content of the course evolved into the current course and is required by all instructors who conduct training mandated by the North Carolina Criminal Justice Education and Training Standards Commission and the North Carolina Sheriffs' Education and Training Standards Commission. Applicants are required to meet all required qualifications. SCC-PSTC-LETP typically schedules one session (**Summer**) annually.

## **National Park Service - Park Ranger Law Enforcement Academy (NPS-PRLEA+)**

**Course Code:** CJC-5055

**Course Hours:** 767.5

**Contact:** Zach Dezarn, 828.306.7046 or z\_dezarn@SouthwesternCC.edu

The National Park Service - Seasonal Law Enforcement Training (NPS-SLET) program delivered by the Southwestern Community College - Division of Public Safety Training Center (SCC-PSTC) is approved by the United States Department of the Interior (DOI) and coordinated by the National Park Service Law Enforcement Training Center (NPS-LETC), Federal Law Enforcement Training Center (FLETC), located in Glynco, Georgia. Successful completion of the NPS-SLET program, in its entirety, is an eligibility requirement for a Type II (Seasonal) Law Enforcement Commission with the National Park Service (NPS) and allied agencies. Course information and application materials may be accessed online at [southwesterncc.edu/pstc/law-enforcement/national-park-service-nps](http://southwesterncc.edu/pstc/law-enforcement/national-park-service-nps).

Applicants are required to meet all required qualifications. SCC-PSTC-LETP typically schedules two sessions (**Spring/Fall**) annually.

## **Mandated In-Service Training (MIST)**

**Course Code:** CJC-3952

**Course Hours:** Varies by topic

**Contact:** Stephen Apel at 828.306.7052 or s\_apel@SouthwesternCC.edu

These courses are designed to provide training in all topical areas that are mandated annually by a North Carolina accrediting commission or agency of state or federal government for continued certification as a law enforcement officer. SCC-PSTC-LETP provides traditional classroom delivery, partner agency site delivery and, based upon topical requirements, the convenience of an online training format. The mandated in-service topics change from year to year based upon the NC Administrative Code and current law.

## **Basic Tactics**

**Course Code:** CJC-5020

**Contact:** Stephen Apel, 828.306.7052 or s\_apel@SouthwesternCC.edu

Through lecture, demonstration, and application, this series of courses re-introduces attendees to basic concepts within the tactical environment. Basic tactics is composed of the essential core skills, concepts, and principles that allow the student to successfully perform within any environment or venue.

## **Speed Measurement Instrument Training (SMI)**

**Course Code:** CJC-3934

**Contact:** Curtis Dowdle, 828.306.7040 or cdowdle@SouthwesternCC.edu

Basic Operator and Recertification courses for certified and employed local, state or federal law enforcement officers. Deputies must be in compliance with the Sheriff's Standards Commission. Attendees and/or agency must provide approved instruments (RADAR/LIDAR) for practice/testing, patrol vehicle and current training manual. The SMI training schedule can be accessed at: [www.SouthwesternCC.edu/pstc/law-enforcement/speed-measurement-training](http://www.SouthwesternCC.edu/pstc/law-enforcement/speed-measurement-training)

## **NCJA School Resource Officer (SRO) Training**

**Course Code:** CJC-4040 • **Course Hours:** 40

**Contact:** Curtis Dowdle, 828.306.7040 or cdowdle@SouthwesternCC.edu

This course provides certified law enforcement officers who are currently assigned, or will be assigned, full-time duty within an elementary, middle or high school, with the history, philosophy and basic skills necessary to serve as a School Resource Officer (SRO).

## **Field Training Officer (FTO) Program**

**Course Code:** CJC-5015 • **Course Hours:** 40

**Contact:** Stephen Apel at 828.306.7052

The purpose of this instruction is to provide direction to prospective Field Training Officers (FTO) regarding the Field Training Officer Program for Probationary Officers. This class is designed to introduce Probationary Officers to the realities and responsibilities of law enforcement and to produce members capable of providing service to the public under routine and emergency conditions.

## **Contracted (10-99) Civilian Role Players**

**Contact:** Matt Reynolds, 828.306.7059

Contracted Civilian Role Players (RPs) contribute to the success of our reality-based law enforcement and public safety training programs delivered through the Southwestern Community College – Division of Public Safety Training Center (SCC-PSTC) campus. Candidates must meet eligibility requirements and pass a background check prior to consideration and assignment to scheduled public-safety scenario-based training.

**For additional SCC-Public Safety Training - Law Enforcement Training Program information, please visit:** [www.SouthwesternCC.edu/pstc/law-enforcement](http://www.SouthwesternCC.edu/pstc/law-enforcement).



# HERITAGE ARTS

## Don't see a time that fits your schedule?

Give us a call! We can set up a class to meet your needs. To learn more information call 828.366.2005 OR email [j\\_marley@SouthwesternCC.edu](mailto:j_marley@SouthwesternCC.edu).

## CERAMICS & POTTERY

### Independent Study Ceramics *Self-Supporting*

**Course Code:** CSP 4000 • **Course Hours:** 4

**Cost:** \$70/Cost of materials not included

**Location:** Swain Center, room 125

**Dates/Times:** W • May 1 - 22 **OR** June 5 - 26 **OR**

July 10 - 31 **OR** Aug. 7 - 28 • 9 - 10A

**Instructor:** J. Marley

Self-directed, independent study for experienced potters and ceramicists. Students will get open access to the pottery studio, including equipment, and can work independently on projects. Prereq: Proof of previous clay, ceramics, or pottery experience.

### Intermediate Wheel

**Course Code:** PRC 3104 • **Course Hours:** 48, 4.8 CEU

**Cost:** \$125/Cost of materials not included

**Location:** Swain Center, room 123

**Dates/Times:** T,Th • May 14 - July 9 • 2 - 5P

**Instructor:** J. Boisseau-Craig

This course covers the basic elements of designing and producing thrown pieces with an emphasis on increasing production, enhancing design, reducing clay waste; and wall/bottom thickness. At the conclusion of the course students should be able to center up to 6 pounds of clay, produce a variety of functional pieces, apply surface decorations, apply glazes, and assist with the operation of an electric kiln.. Prereq: Beginning Wheel or instructor's permission.

### Surface Decoration

**Course Code:** PRC 3104 • **Course Hours:** 48, 4.8 CEU

**Cost:** \$125/Cost of materials not included

**Location:** Swain Center, room 123

**Dates/Times:** T,Th • May 14 - July 16 • 6 - 9P

**Instructor:** J. Boisseau-Craig

During this course students will concentrate on a variety of techniques for enhancing both wheel thrown and hand-built pottery. These include cutting, carving, surface expansion, faceting, piercing, sprigging, stamp making, stamping, paddling, and cracking. Prereq: Beginning Wheel, or Handbuilding, and/or instructor's permission.

### Glazing Basics *Self-Supporting*

**Course Code:** CSP-4000 • **Course Hours:** 6

**Cost:** \$58/Cost of materials not included

**Location:** Swain Center, room 123

**Dates/Times:** S • May 18 • 10A - 4P

**Instructor:** S. Coe

This course will teach students the different applications of glazing and the use of underglazes and stains. Students will need to bring 3-4 bisque tile and or pots to class to practice techniques on. All pots glazed during the workshop will be fired the following week. Prereq: Previous pottery experience and/or instructor's permission.

### Handbuilding I

**Course Code:** PRC 3104 • **Course Hours:** 24, 2.4 CEU

**Cost:** \$70/Cost of materials not included

**Location:** Swain Center, room 125

**Dates/Times:** T,Th • May 21 - June 13 • 9A - 12P

**Instructor:** J. Marley

No experience needed, great for all levels. We will use slabs, pinch pots, coils, and extruded shapes to make a variety of useful and decorative forms. Prereq: None.

### Decorating with Slips *Self-Supporting*

**Course Code:** CSP 4000 • **Course Hours:** 5

**Cost:** \$65/Cost of clay not included

**Location:** Swain Center, room 123

**Dates/Times:** F • May 31 • 12 - 5P

**Instructor:** J. Kolenda

Explore decorating your pottery with assorted color slips using brushes, applicator bottles, and sgraffito tools. Students will need to bring several leather-hard pieces and greenware to work with as well as clay, brushes, and applicator bottles. Colored slips provided; cost of clay not included. Prereq: Previous experience, and/or instructor's permission.

### Experimental Raku *Self-Supporting*

**Course Code:** CSP 4000 • **Course Hours:** 8

**Cost:** \$84/Cost of materials not included

**Location:** Swain Center, room 123

**Dates/Times:** S,Su • June 1 - 2 **OR** June 15 - 16 • 10A - 2P

**Instructor:** N. Petersohn

Explore Raku from start to finish and see how it is different and more unpredictable than typical electric firings. Please note: this process involves fire and open flames – students will be responsible for handling their own pieces. Students should come ready with bisqued pieces. Students will be firing throughout both days of the class. Prereq: Beg. Wheel or previous clay experience.

### Intro to Clay *Self-Supporting*

**Course Code:** CSP-4000 • **Course Hours:** 1.5

**Cost:** \$30/Cost of materials included

**Location:** Swain Center, room 125

**Dates/Times:** M • June 3 **OR** July 8 **OR** Aug. 5 • 11A - 12:30P

**Instructor:** J. Marley

Play with clay and get your hands dirty! Students will hand-build a cup and bowl from slabs and will select their glazes for firing after class. Pottery will be ready to pick up in two weeks. All ages welcome. Prereq: None.

### Raku II

**Course Code:** PRC 3104 • **Course Hours:** 24, 2.4 CEU

**Cost:** \$70/Cost of materials not included

**Location:** Swain Center, room 125

**Dates/Times:** T,Th • June 4 - 27 • 6 - 9P

**Instructor:** J. McKee

This class will focus on Copper Matt finishes. Students should create work outside of class for firing from Raku clay or another clay body that can handle the thermal shock. Prereq: Beginning Wheel or Handbuilding, and/or instructor's permission.

# HERITAGE ARTS

## Special Projects

**Course Code:** PRC 3104 • **Course Hours:** 48 CE, 4.8 CEU

**Cost:** \$125/Cost of materials not included

**Location:** Swain Center, room 123

**Dates/Times:** T,Th • June 4 - Aug. 1 • 11A - 2P

**Instructor:** N. Petersohn

Work on whatever you would like and get help and critique on your current projects. I am open to projects with hand-building, throwing, slip casting, carving, trimming and anything you can think of that has been causing you trouble! Let's experiment, try new techniques and have fun with what you're working on! Prereq: Beg. Wheel or previous clay experience.

## Beg. & Int. Wheel

**Course Code:** PRC 3104 • **Course Hours:** 48, 4.8 CEU

**Cost:** \$125/Cost of materials not included

**Location:** Swain Center, room 123

**Dates/Times:** M,W • June 10 - Aug. 7 • 6 - 9P

**Instructor:** E. Delfeld

For beginners and intermediate students. Beginning students will learn to center clay on a wheel, turn, trim, and glaze basic forms. Intermediate students will focus on form and consistency of technique, glaze application. Prereq: None.

## Large Scale Throwing

**Course Code:** PRC-3104 • **Course Hours:** 15, 1.5 CEU

**Cost:** \$70/Cost of materials not included

**Location:** Swain Center, room 125

**Dates/Times:** Sun.,T,Th,S • June 23 - 29 • Su, 10A - 2P; T, 2 - 6P; Th, 2 - 5P, S, 10A - 2P

**Instructor:** N. Petersohn

Learn how to create and decorate large pieces of pottery. On the first day, we will focus on joining two smaller forms. The Japanese throwing technique will be covered on the second day. The third and fourth day will focus on decoration and glazing. Prereq: Beginning Wheel or instructor's permission.

## Creating Clay Stamps *Self-Supporting*

**Course Code:** CSP 4000 • **Course Hours:** 5

**Cost:** \$65/Cost of materials not included

**Location:** Swain Center, room 123

**Dates/Times:** F • June 28 • 12 - 5P

**Instructor:** J. Kolenda

Make your own clay stamps and learn new ways of using them. Instructor will provide many objects to create a variety of stamps and textures. Techniques will be demonstrated on how to use your stamps. Students will need bring pottery tools and a 12x12 inch, 1 inch thick slab to the class. Cost of materials not included. Prereq: Previous experience, and/or instructor's permission.

## Tea Pots

**Course Code:** PRC 3104 • **Course Hours:** 24, 2.4 CEU

**Cost:** \$70/Cost of materials not included

**Location:** Swain Center, room 125

**Dates/Times:** T,Th • July 9 - Aug. 1 • 9A - 12P

**Instructor:** S. Coe

Create a variety of tea pots and learn about their uses. Learn how to attach spouts and handles, and how to create lids. Throwing experience is a must. Prereq: Beginning Wheel and/or instructor's permission.

## Using Press Molds *Self-Supporting*

**Course Code:** CSP 4000 • **Course Hours:** 3.5

**Cost:** \$38/Cost of materials not included

**Location:** Swain Center, room 125

**Dates/Times:** Th • July 11 • 2:30 - 6P

**Instructor:** N. Petersohn

Explore using plaster molds and stamps to create beautiful, replicated additions to your pottery. Students will need to bring greenware or leather hard work to attach pieces to. Students can also create stamps from the press molds. Prereq: Beg. Wheel, hand-building, or previous clay experience.

## Handmade Ceramic Jewelry *Self-Supporting*

**Course Code:** CSP 4000 • **Course Hours:** 3.5

**Cost:** \$38/Cost of materials not included

**Location:** Swain Center, room 123

**Dates/Times:** Th • July 18 • 2:30 - 6P

**Instructor:** N. Petersohn

Learn how to make beautiful handmade ceramic beads, earrings, pendants and more using texture rollers, cookie cutters and other simple components. Bring your clay, cookie cutters, stamps, any jewelry making supplies, underglazes, transfers, etc. Prereq: None.

## Bark Vessels *Self-Supporting*

**Course Code:** CSP 4000 • **Course Hours:** 5

**Cost:** \$65/Cost of materials not included

**Location:** Swain Center, room 125

**Dates/Times:** F • July 26 • 12 - 5P

**Instructor:** J. Kolenda

Come learn how to create bark texture on your hand-built vessels. Branch legs and decorative leaves will be added to complete the natural effect. Students will need to bring pottery tools and a 14x14 inch, ½ inch thick slab of clay and additional fresh clay. All slips and textured objects will be supplied. Prereq: Previous experience, and/or instructor's permission.



# HERITAGE ARTS

## Throwing Techniques Workshop

**Course Code:** PRC-3104 • **Course Hours:** 12, 1.2 CEU

**Cost:** \$70/Cost of materials not included

**Location:** Swain Center, room 125

**Dates/Times:** T,Th • July 30 - Aug. 8 • 2 - 6P

**Instructor:** N. Petersohn

**Special note:** Class dates are July 30, Aug. 6, and Aug. 8. Enhance your wheel throwing skills with this three-day workshop! Each day will have a different focus. July 30 will be throwing consistent and faster. Aug. 6 will focus on throwing off the hump. Aug. 8 will be using carving tools to transform your pots. Prereq: Beginning Wheel or instructor's permission.

## Glaze with Confidence *Self-Supporting*

**Course Code:** CSP 4000 • **Course Hours:** 3

**Cost:** \$33/Cost of materials not included

**Location:** Swain Center, room 123

**Dates/Times:** Th • Aug. 1 • 2 - 5P

**Instructor:** N. Petersohn

Learn how to apply glaze to your pottery. We'll cover dipping and brushing, and how to glaze large and small pieces. Students will need to bring 4-5 bisqued pots to class to practice techniques on. Students may bring their own commercial glazes to try. Prereq: Previous pottery experience and/or instructor's permission.

## FIBER & WEAVING

### Gourd Birdhouse *Self-Supporting*

**Course Code:** CSP-4000 • **Course Hours:** 5

**Cost:** \$85/Cost of materials included

**Location:** Swain Center, room 123

**Dates/Times:** S • May 25 • 12:30 - 5:30P

**Instructor:** S. Davis

Create your own hand-painted gourd birdhouse for your yard! Each participant will use acrylic paints to decorate their gourd, and then each will be sealed to hang outside. We'll also cover how to cut and clean gourds, as well as growing your own from the seeds. Prereq: None.

### Intro to Fabric Construction

**Course Code:** PRC-3104 • **Course Hours:** 18, 1.8 CEU

**Cost:** \$70/Cost of some materials included

**Location:** Macon Campus, room 114

**Dates/Times:** T • June 4 - July 9 • 6 - 9P

**Instructor:** N. Petersohn

This class is designed to introduce the novice to the basics of fabric construction using a sewing machine. The class will cover basic terminology, preparation for construction, how to read a pattern and select appropriate materials, along with techniques for using a sewing machine. Students will be expected to purchase a basic sewing kit and the materials needed for two projects. Sewing machines will be provided, however, students can bring their own machine if they wish to learn how to use it. Some materials will be provided, along with access to a serger for project construction. Prereq: None.

## Independent Study Weaving *Self-Supporting*

**Course Code:** CSP 4000 • **Course Hours:** 2

**Cost:** \$65/Cost of materials included

**Location:** Swain Center, room 125

**Dates/Times:** W • May 1 - 22 **OR** June 5 - 26 **OR**

July 10 - 31 **OR** Aug. 7 - 28 • 10:30 - 10:45A

**Instructor:** J. Marley

Self-directed, independent study for experienced individuals. Students will get open access to the studio and can meet weekly with the instructor to review progress. Prereq: Portfolio review and/or previous experience.

## PAINTING & DRAWING

### Painting with Oils *Self-Supporting*

**Course Code:** CSP 4000 • **Course Hours:** 12

**Cost:** \$137/Cost of materials not included

**Location:** Swain Center, room 102

**Dates/Times:** Th • May 22 - June 12 • 1 - 4P

**Instructor:** J. Marley

Oil painting for beginners! Learn how to mix colors, make mediums, and work in oils. Students will need canvas boards, natural hair brushes, a basic oil set, cloth towels, turpentine, and linseed. Easels available if you don't have your own. Prereq: None.

### Plein Air Painting *Self-Supporting*

**Course Code:** CSP 4000 • **Course Hours:** 2

**Cost:** \$46/Cost of materials not included

**Location:** Swain Center, room 102 & Gazebo

**Dates/Times:** M • June 3 **OR** Aug. 5 • 10A - 12P

**Instructor:** J. Marley

Explore Plein Air painting (painting outside) at the historic SCC Swain Center. This workshop will focus on capturing quick landscape sketches in oil or acrylic paints. Students should bring an easel (box easel preferred), brushes, oil or acrylic paints, mediums, canvases or boards to paint on. Prereq: None.

### Sketch & Relax *Self-Supporting*

**Course Code:** CSP 4000 • **Course Hours:** 1

**Cost:** \$23/Cost of materials not included

**Location:** Swain Center, room 102 & Gazebo

**Dates/Times:** Th • June 3 **OR** Aug. 5 • 1 - 2P

**Instructor:** J. Marley

Sketch a variety of subjects found in nature while focusing on relaxing through breathing and concentration techniques. Great for individuals with beginning to intermediate drawing skills. Students should bring a sketchbook, pencils, pens, and any other drawing materials they would like to use. Prereq: None.

# HERITAGE ARTS

## **Intro to Drawing** *Self-Supporting*

**Course Code:** CSP 4000 • **Course Hours:** 10

**Cost:** \$65/Cost of materials not included

**Location:** Swain Center, room 102

**Dates/Times:** T • June 4 - 25 • 5:30 - 8P

**Instructor:** E. Elsey

This course will help you learn techniques to improve your drawing and observation skills, and understand how to realistically draw objects, interiors and cityscapes. Students should bring large newsprint pad/large drawing pad, pencil. Prereq: None.

## **Intro to Acrylic Painting** *Self-Supporting*

**Course Code:** CSP 4000 • **Course Hours:** 10

**Cost:** \$65/Cost of materials not included

**Location:** Swain Center, room 102

**Dates/Times:** Th • June 6 - 27 • 5:30 - 8P

**Instructor:** E. Elsey

Students will create a realistic representational acrylic painting from start to finish. Along the way this course will cover mixing colors, understand value/contras, brushes, tools, and how to use them. Students will need to bring their own canvas, student grade acrylic paint, synthetic acrylic brushes. Prereq: None.

## **Intro to Traditional Oil Painting** *Self-Supporting*

**Course Code:** CSP 4000 • **Course Hours:** 12.5

**Cost:** \$106/Cost of materials included

**Location:** Swain Center, room 102

**Dates/Times:** M • July 1 - 29 • 5:30 - 8P

**Instructor:** E. Elsey

Create an oil painting in the Old Masters Style from start to finish. Students will learn how to safely use oil paints, mix colors, color theory, and oil painting history. All materials to create one painting, including paint, brushes, canvas, and mediums will be provided. Prereq: None.

## **Drawing Camp** *Self-Supporting*

**Course Code:** CSP 4000 • **Course Hours:** 1

**Cost:** \$102/Cost of materials not included

**Location:** Swain Center, room 102

**Dates/Times:** T,W,Th • Aug. 6 - 8 • 1 - 4P

**Instructor:** J. Marley

We'll cover a variety of methods for quickly sketching ideas, increase hand eye coordination, and learn ways to practice to grow profficiency. Students will need a 8x10 inch sketchbook, drawing pencils, and a water bottle for staying hydrated when we go outside. Prereq: None.

## **PHOTOGRAPHY**

### **Digital Photography I & II**

**Course Code:** PHO 3001 • **Course Hours:** 24, 2.4 CEU

**Cost:** \$70/Cost of materials not included

**Location:** Swain Center, room 105

**Dates/Times:** T,Th • June 4 - 27 • 5:30 - 8:30P

**Instructor:** M. Waller

Combined class for beginners and intermediate skill levels. Learn how to use your camera to capture great photos! Geared towards improving photography skills based on the student's interest, no matter your skill level. Topics include camera and lighting basics, composition, and Light-room cataloging and editing. Prereq: None.

### **Drone Photography**

**Course Code:** PHO 3001 • **Course Hours:** 12, 1.2 CEU

**Cost:** \$70/Cost of materials not included

**Location:** Swain Center, room 105

**Dates/Times:** M • July 8 - 29 • 5:30 - 8:30P

**Instructor:** M. Waller

This course focuses on the use of drones to capture sweeping landscapes and panoramic shots. Students will learn how to use their drones to capture Images and cinematic video. We'll also cover editing your images and movies. This course is taught by a licensed drone pilot. Please bring your drone. Prereq: None.

## **PRINTMAKING**

### **Cherokee Language Printing** *Self-Supporting*

**Course Code:** CSP 4000 • **Course Hours:** 2

**Cost:** \$30/Cost of materials included

**Location:** Swain Center, room 110

**Dates/Times:** M • May 20 • 10A - 12P

**Instructor:** J. Marley

This class will explore the history of printing in the Cherokee language. Students will learn to use the letterpress and print using Cherokee Syllabary. Students age 10 and up welcome. Prereq: None.

### **Printmaking Allsorts** *Self-Supporting*

**Course Code:** CSP 4000 • **Course Hours:** 4

**Cost:** \$45/Cost of materials included

**Location:** Swain Center, room 110

**Dates/Times:** T • June 11 • 10A - 2P

**Instructor:** A. Kirtley

An introductory class that experiments with hand-colored linoleum prints, debossing, and if there's time, another technique, maybe nature printing or quick collagraphs. Prereq: None.

## HERITAGE ARTS

### **Intro to Proofpress - Post Card Exchange** *Self-Supporting*

**Course Code:** CSP 4000 • **Course Hours:** 2

**Cost:** \$25/Cost of materials included

**Location:** Swain Center, room 110

**Dates/Times:** T • July 9 • 10A - 1P

**Instructor:** A. Kirtley

A quick introduction to relief printmaking and typesetting in which participants will design and print their own set of postcards. They will carve a linoleum block, complement it with text and print them using the proof press. Prereq: None.

### **Paddle Fan-tasia!** *Self-Supporting*

**Course Code:** CSP 4000 • **Course Hours:** 4

**Cost:** \$45/Cost of materials included

**Location:** Swain Center, room 110

**Dates/Times:** T • Aug. 6 • 10A - 2P

**Instructor:** A. Kirtley

Participants will get an introduction to letterpress printing by making two-sided paddle fans for parties, events and other hot times! One side will be a typeset greeting/information and the other, the student's own design carved from a linoleum block. Prereq: None.

### **Independent Study Print** *Self-Supporting*

**Course Code:** CSP 4000 • **Course Hours:** 1

**Cost:** \$50/Cost of materials not included

**Location:** Swain Center, room 110

**Dates/Times:** W • May 1 - 22 **OR** June 5 - 26 **OR**

July 10 - 31 **OR** Aug. 7 - 28 • 10:10 - 10:25A

**Instructor:** J. Marley

Self-directed, independent study for experienced individuals. Students will get open access to the studio and can meet weekly with the instructor to review progress Prereq: Review of portfolio and/or previous experience.



## Heritage Arts Classes **ON DEMAND**

Are you visiting the area or  
feeling spontaneous?

Book one of our "on demand" classes! Each class will get you in studio with hands on instruction. Most classes you can take your finished projects home the same day!

### **COURSES:**

#### **Sketching Basics**

Hours: 1 • Cost: \$30

#### **Intro to Clay**

Hours: 1.5 • Cost: \$30

#### **Make a Mug**

Hours: 2 • Cost: \$35

#### **Block Printing**

Hours: 2 • Cost: \$40



**For more information:**

828.366.2005



# Next NC Scholarship:

An opportunity for **FREE** tuition & fees at SCC this fall!



North Carolina residents from households making \$80,000 or less may qualify for a new scholarship opportunity that covers all tuition and fees at Southwestern Community College starting this fall.

The Next NC Scholarship is a financial aid program that helps qualified individuals by providing \$3,000 – enough to cover all tuition and fees for a full year at SCC with enough left over to assist with books, food or housing.

To become eligible, current and prospective students need only fill out the FAFSA form.

“One of the best things about this is students won’t have to repay any of the money they receive,” said Dr. Mark Ellison, Dean of Students at Southwestern. “It’s also nice that students aren’t required to complete any additional paperwork other than the FAFSA, which is something they’re required to fill out anyway. Upon filling out the FAFSA, if students are eligible, they will receive the Next NC Scholarship.”

Anyone interested in taking advantage of this opportunity can fill out the FAFSA at <http://tinyurl.com/yr69t7pp>.

To learn more about the Next NC Scholarship, visit [www.NextNCScholarship.org](http://www.NextNCScholarship.org).

And to learn more about Southwestern and the career fields it offers, visit [www.SouthwesternCC.edu](http://www.SouthwesternCC.edu), call 828.339.4000 or drop by your nearest SCC location.





10<sup>th</sup> Annual Gala to Support Scholarships



**Last year's event **red** sold out,  
so get your ticket early!**

To purchase tickets or for sponsorship information, contact  
Kathy Posey at 828.339.4227 or visit [www.SouthwesternCC.edu/gala](http://www.SouthwesternCC.edu/gala)





ONE TEAM  
ONE COMMUNITY

**ingles**  
**IS HIRING**  
**NOW!**

**APPLY TODAY,  
START TOMORROW!**

Do current circumstances  
have you looking for work?  
Ingles is hiring both short-term  
and long-term positions.

**JOIN OUR TEAM.**  
**inglescareers.com**

**Swain**   
Public Transit

**Affordable Transportation**

- Cancer & Dialysis Treatments
- Education
- Employment
- Medical Appointments
- Non Emergency
- and more!
- Pharmacy
- Grocery Store



828.488.3213



Swain Public Transit



[www.StateofFranklin.org/Transit](http://www.StateofFranklin.org/Transit)

**CHEROKEE**  
**HOME CENTER**

We proudly carry:



1623 ACQUONI ROAD • CHEROKEE  
828-497-8980 • [cherokeehomecenter.net](http://cherokeehomecenter.net)

**WNC's Largest Andersen**  
**Windows & Doors Dealer**

WINDOWS • DOORS  
**Andersen** 

*Come home to Andersen.*

**Your Dream Home in the Mountains**  
**Begins & Ends With Us.**

Locations Serving All of WNC

Waynesville Showroom & Design Center  
100 Charles St. Waynesville NC  
828.456.6051

Cashiers Design Center  
448 W US Hwy 64, Ste 4 Cashiers NC  
828.743.3508

Andersen -  
The most trusted  
name in windows  
and doors

Asheville Design Center  
481 Hendersonville Rd Asheville NC  
828.298.4597



*Haywood Builders Supply*



Non Profit Org.  
U.S. Postage  
PAID  
Waynesville, NC  
Permit #19  
ECRWSS

Residential Customer

  
**Sophisticut**  
Hair Salon & Day Spa

308 Depot St • Franklin  
828.524.2419 or 828.524.3395  
Open Tuesday-Friday 9-5 • Saturday 9-2  
GIVE THE GIFT OF BEAUTY AND SPA



**BUY 2  
GET 1  
FREE**  
ALL RETAIL PRODUCTS  
*\*Must Present Coupon*

  
**\$150 SPA PACKAGE**  
• 30min. Hydro Massage  
• One Hour Massage • Facial

**SPA SPECIAL**  
Facial,  
Manicure  
& Pedicure  
**\$110**

  
**SPA SPECIAL**  
Manicure, Pedicure  
and One Hour  
Hydromassage visit  
**\$99 95**



304 Depot Street • Next Door to Sophisticut  
**SWEET ORPHELIA'S**  
ANTIQUES • USED QUALITY FURNITURE  
COLLECTIBLES • PLANTS  
Ethan Allen • Bassett • Broyhill  
**50% OFF EVERYTHING SALE!**



**FREE GIFT**  
WITH EVERY GIFT CERTIFICATE PURCHASE

**KÉRASTASE**  
PARIS  
**PUREOLOGY**  
PROFESSIONAL COLOR CARE

**STYLIST NEEDED!**  
COME JOIN OUR TEAM!