

Community College Survey of Student Engagement  
2005 Benchmark Report  
**Southwestern Community College**

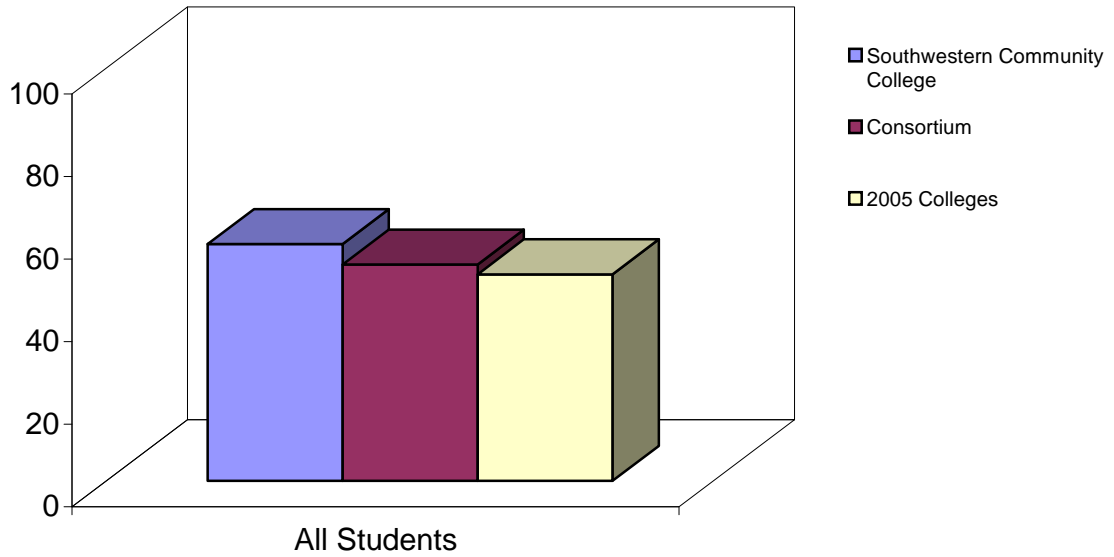
All Students				
Benchmark	Southwestern Community College	Comparison Group Statistics		
			Consortium	2005 Colleges
<b>Active and Collaborative Learning</b>	57.2	Benchmark Score	52.9	50.0
		Score Difference	4.3	7.2
<b>Student Effort</b>	55.0	Benchmark Score	51.3	50.0
		Score Difference	3.7	5.0
<b>Academic Challenge</b>	53.6	Benchmark Score	51.5	50.0
		Score Difference	2.1	3.6
<b>Student-Faculty Interaction</b>	58.3	Benchmark Score	53.9	50.0
		Score Difference	4.4	8.3
<b>Support for Learners</b>	57.3	Benchmark Score	52.4	50.0
		Score Difference	4.9	7.3
		Number of Colleges	11	257

**Benchmark Score:** Each benchmark score was computed by averaging the scores on survey items that comprise that benchmark. To compensate for disproportionately large numbers of full-time students in the sample, all means used in the creation of the benchmarks are weighted by full- and part-time status. Benchmark scores are standardized so that the weighted mean across all students is 50 and the standard deviation across all participating students is 25. Institutions' benchmark scores are computed by taking the weighted average of their students' standardized scores.

**Score Difference:** The result of subtracting the comparison group score (same consortia colleges or 2005 colleges) from your college's score on each benchmark.

**Support for Learners  
Bar Charts and Benchmark Item Composition  
All Students**

Description - Students perform better and are more satisfied at colleges that are committed to their success and cultivate positive working and social relationships among different groups on campus.



Benchmark Scores			
	Southwestern Community College	Consortium	2005 Colleges
<b>All Students</b>	57.3	52.4	50.0

<b>Support for Learners</b>	
9b.	Providing the support you need to help you succeed at this college
9c.	Encouraging contact among students from different economic, social, and racial or ethnic backgrounds
9d.	Helping you cope with your non-academic responsibilities (work, family, etc.)
9e.	Providing the support you need to thrive socially
9f.	Providing the financial support you need to afford your education
13a.	Frequency: Academic advising/planning
13b.	Frequency: Career Counseling

Community College Survey of Student Engagement  
2005 Benchmark Report  
**Southwestern Community College**

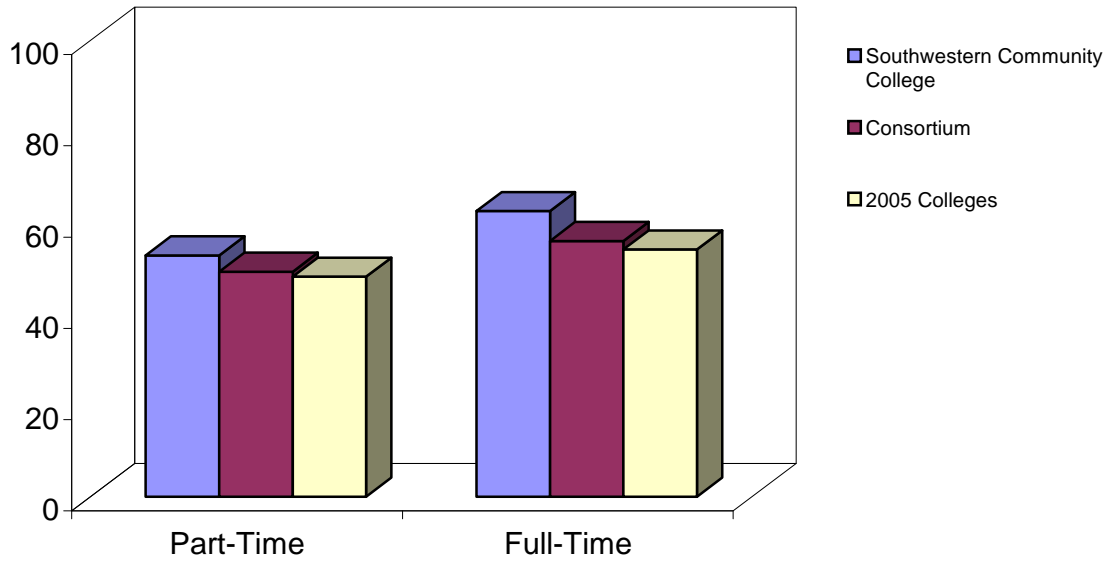
Part-Time Students				
Benchmark	Southwestern Community College	Comparison Group Statistics		
			Consortium	2005 Colleges
<b>Active and Collaborative Learning</b>	50.3	Benchmark Score	48.6	45.9
		Score Difference	1.7	4.4
<b>Student Effort</b>	48.7	Benchmark Score	46.1	46.5
		Score Difference	2.5	2.2
<b>Academic Challenge</b>	45.2	Benchmark Score	46.5	46.1
		Score Difference	-1.3	-0.9
<b>Student-Faculty Interaction</b>	49.0	Benchmark Score	49.0	46.8
		Score Difference	-0.1	2.2
<b>Support for Learners</b>	52.9	Benchmark Score	49.3	48.2
		Score Difference	3.6	4.7
		Number of Colleges	11	257

Full-Time Students				
Benchmark	Southwestern Community College	Comparison Group Statistics		
			Consortium	2005 Colleges
<b>Active and Collaborative Learning</b>	65.6	Benchmark Score	58.0	55.9
		Score Difference	7.5	9.7
<b>Student Effort</b>	62.5	Benchmark Score	57.5	55.8
		Score Difference	5.0	6.7
<b>Academic Challenge</b>	63.6	Benchmark Score	57.5	55.7
		Score Difference	6.0	7.9
<b>Student-Faculty Interaction</b>	69.4	Benchmark Score	59.7	56.4
		Score Difference	9.7	12.9
<b>Support for Learners</b>	62.6	Benchmark Score	56.0	54.2
		Score Difference	6.5	8.4
		Number of Colleges	11	257

**Benchmark Score:** Each benchmark score was computed by averaging the scores on survey items that comprise that benchmark. To compensate for disproportionately large numbers of full-time students in the sample, all means used in the creation of the benchmarks are weighted by full- and part-time status. Benchmark scores are standardized so that the weighted mean across all students is 50 and the standard deviation across all participating students is 25. Institutions' benchmark scores are computed by taking the weighted average of their students' standardized scores.

**Support for Learners  
Bar Charts and Benchmark Item Composition  
Enrollment Status Breakout**

Description - Students perform better and are more satisfied at colleges that are committed to their success and cultivate positive working and social relationships among different groups on campus.




---

**Benchmark Scores**

---

	<b>Southwestern Community College</b>	<b>Consortium</b>	<b>2005 Colleges</b>
<b>Part-Time</b>	52.9	49.3	48.2
<b>Full-Time</b>	62.6	56.0	54.2

<b>Support for Learners</b>	
9b.	Providing the support you need to help you succeed at this college
9c.	Encouraging contact among students from different economic, social, and racial or ethnic backgrounds
9d.	Helping you cope with your non-academic responsibilities (work, family, etc.)
9e.	Providing the support you need to thrive socially
9f.	Providing the financial support you need to afford your education
13a.	Frequency: Academic advising/planning
13b.	Frequency: Career Counseling

Community College Survey of Student Engagement  
2005 Benchmark Report  
**Southwestern Community College**

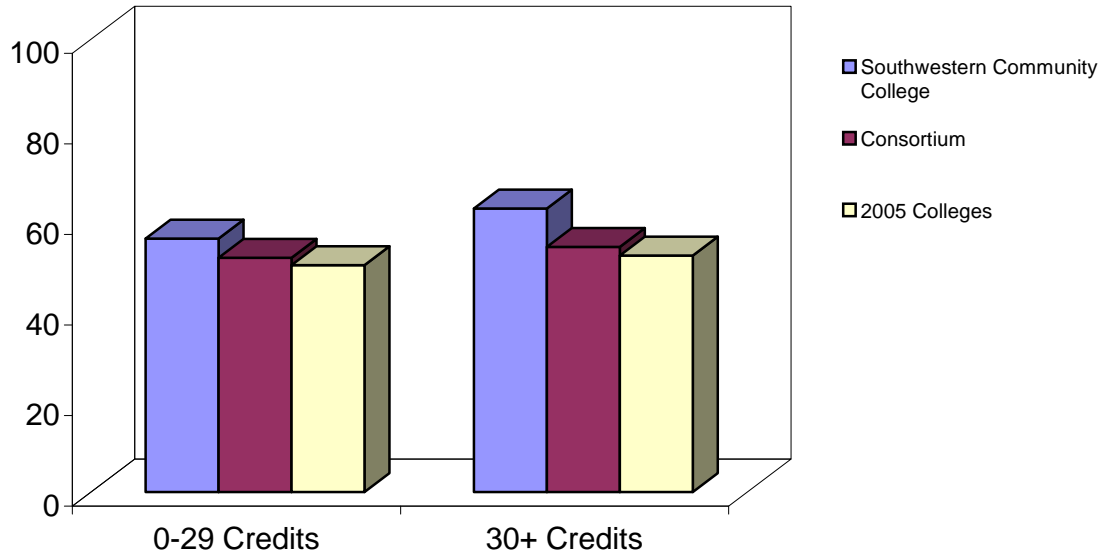
0 to 29 Credits				
Benchmark	Southwestern Community College	Comparison Group Statistics		
			Consortium	2005 Colleges
<b>Active and Collaborative Learning</b>	55.1	Benchmark Score	50.8	47.5
		Score Difference	4.3	7.6
<b>Student Effort</b>	52.0	Benchmark Score	50.0	49.2
		Score Difference	1.9	2.8
<b>Academic Challenge</b>	52.1	Benchmark Score	50.1	48.2
		Score Difference	2.0	3.9
<b>Student-Faculty Interaction</b>	54.5	Benchmark Score	51.5	48.4
		Score Difference	3.0	6.1
<b>Support for Learners</b>	56.0	Benchmark Score	51.7	50.1
		Score Difference	4.3	5.9
		Number of Colleges	11	257

30+ Credits				
Benchmark	Southwestern Community College	Comparison Group Statistics		
			Consortium	2005 Colleges
<b>Active and Collaborative Learning</b>	64.1	Benchmark Score	57.7	56.2
		Score Difference	6.4	7.9
<b>Student Effort</b>	63.0	Benchmark Score	53.8	52.9
		Score Difference	9.2	10.1
<b>Academic Challenge</b>	58.6	Benchmark Score	54.6	54.6
		Score Difference	3.9	4.0
<b>Student-Faculty Interaction</b>	69.0	Benchmark Score	59.6	56.7
		Score Difference	9.4	12.3
<b>Support for Learners</b>	62.6	Benchmark Score	54.1	52.2
		Score Difference	8.4	10.4
		Number of Colleges	11	257

**Benchmark Score:** Each benchmark score was computed by averaging the scores on survey items that comprise that benchmark. To compensate for disproportionately large numbers of full-time students in the sample, all means used in the creation of the benchmarks are weighted by full- and part-time status. Benchmark scores are standardized so that the weighted mean across all students is 50 and the standard deviation across all participating students is 25. Institutions' benchmark scores are computed by taking the weighted average of their students' standardized scores.

**Support for Learners  
Bar Charts and Benchmark Item Composition  
Credit Hour Status Breakout**

Description - Students perform better and are more satisfied at colleges that are committed to their success and cultivate positive working and social relationships among different groups on campus.



**Benchmark Scores**

	<b>Southwestern Community College</b>	<b>Consortium</b>	<b>2005 Colleges</b>
<b>0-29 Credits</b>	56.0	51.7	50.1
<b>30+ Credits</b>	62.6	54.1	52.2

<b>Support for Learners</b>	
9b.	Providing the support you need to help you succeed at this college
9c.	Encouraging contact among students from different economic, social, and racial or ethnic backgrounds
9d.	Helping you cope with your non-academic responsibilities (work, family, etc.)
9e.	Providing the support you need to thrive socially
9f.	Providing the financial support you need to afford your education
13a.	Frequency: Academic advising/planning
13b.	Frequency: Career Counseling