

# Community College Survey of Student Engagement 2005 Benchmark Report **Southwestern Community College**

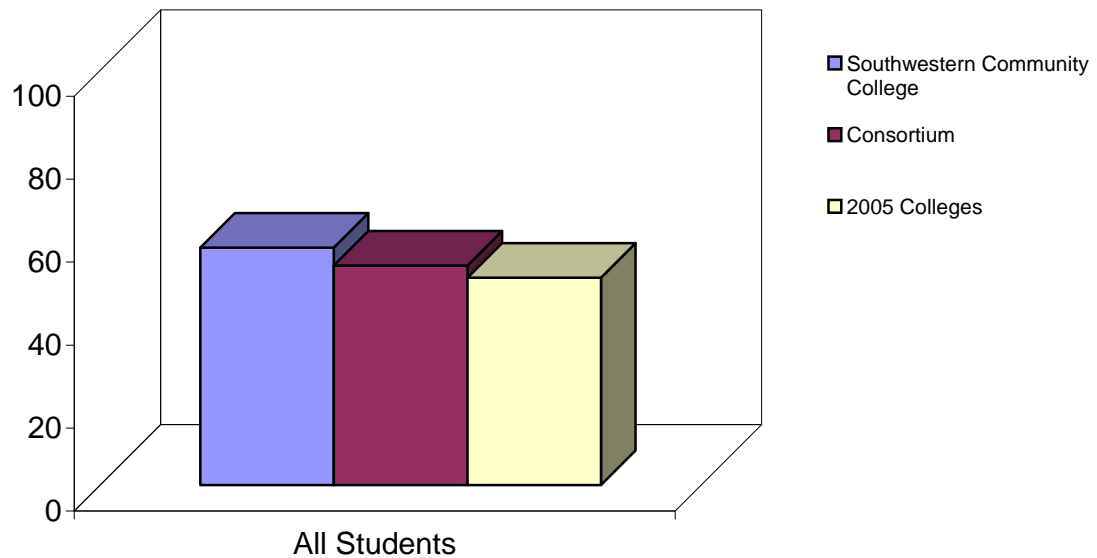
All Students				
Benchmark	Southwestern Community College	Comparison Group Statistics		
			Consortium	2005 Colleges
Active and Collaborative Learning	57.2	Benchmark Score	52.9	50.0
		Score Difference	4.3	7.2
Student Effort	55.0	Benchmark Score	51.3	50.0
		Score Difference	3.7	5.0
Academic Challenge	53.6	Benchmark Score	51.5	50.0
		Score Difference	2.1	3.6
Student-Faculty Interaction	58.3	Benchmark Score	53.9	50.0
		Score Difference	4.4	8.3
Support for Learners	57.3	Benchmark Score	52.4	50.0
		Score Difference	4.9	7.3
		Number of Colleges	11	257

**Benchmark Score:** Each benchmark score was computed by averaging the scores on survey items that comprise that benchmark. To compensate for disproportionately large numbers of full-time students in the sample, all means used in the creation of the benchmarks are weighted by full- and part-time status. Benchmark scores are standardized so that the weighted mean across all students is 50 and the standard deviation across all participating students is 25. Institutions' benchmark scores are computed by taking the weighted average of their students' standardized scores.

**Score Difference:** The result of subtracting the comparison group score (same consortia colleges or 2005 colleges) from your college's score on each benchmark.

**Active and Collaborative Learning**  
**Bar Charts and Benchmark Item Composition**  
**All Students**

Description - Students learn more when they are actively involved in their education and have opportunities to think about and apply what they are learning in different settings. Through collaborating with others to solve problems or master challenging content, students develop valuable skills that prepare them to deal with the kinds of situations and problems they will encounter in the workplace, the community, and their personal lives.

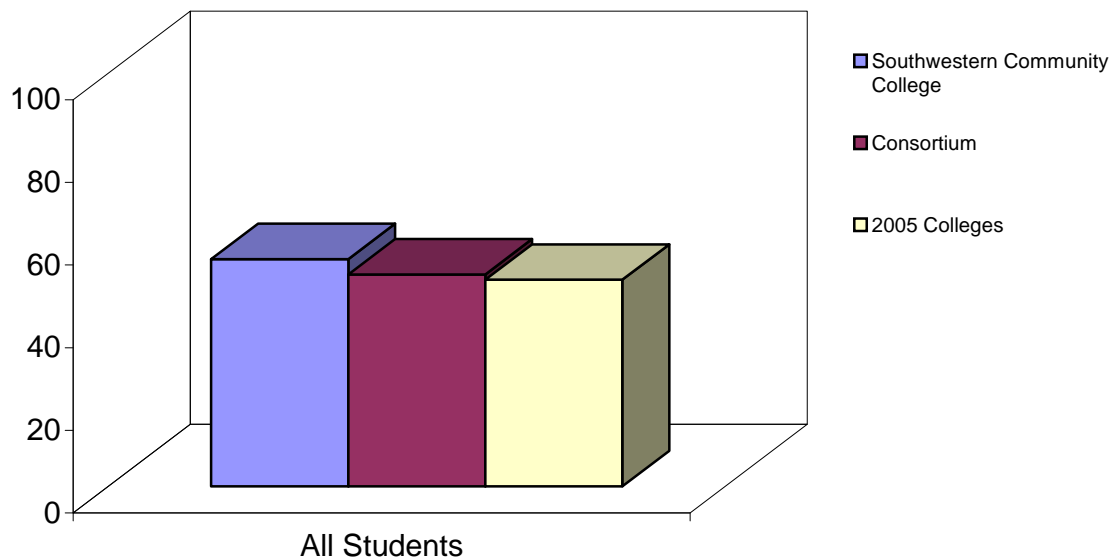


Benchmark Scores			
	Southwestern Community College	Consortium	2005 Colleges
All Students	57.2	52.9	50.0

Active and Collaborative Learning	
4a.	Asked questions in class or contributed to class discussions
4b.	Made a class presentation
4f.	Worked with other students on projects during class
4g.	Worked with classmates outside of class to prepare class assignments
4h.	Tutored or taught other students (paid or voluntary)
4i.	Participated in a community-based project as a part of a regular course
4r.	Discussed ideas from your readings or classes with others outside of class (students, family members, co-workers, etc.)

**Student Effort**  
**Bar Charts and Benchmark Item Composition**  
**All Students**

Description - Students' own behaviors contribute significantly to their learning and the likelihood that they will successfully attain their educational goals.

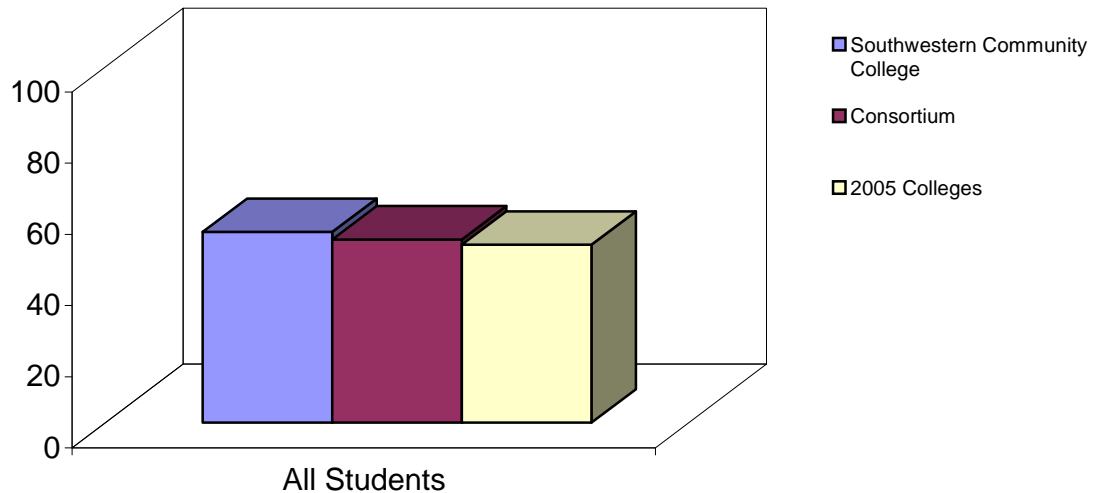


Benchmark Scores			
	Southwestern Community College	Consortium	2005 Colleges
All Students	55.0	51.3	50.0

Student Effort	
4c.	Prepared two or more drafts of a paper or assignment before turning it in
4d.	Worked on a paper or project that required integrating ideas or information from various sources
4e.	Come to class without completing readings or assignments
6b.	Number of books read on your own (not assigned) for personal enjoyment or academic enrichment
10a.	Preparing for class (studying, reading, writing, rehearsing, doing homework, or other activities related to your program)
13d.	Frequency of use: Peer or other tutoring
13e.	Frequency of use: Skill labs
13h.	Frequency of use: Computer lab

**Academic Challenge**  
**Bar Charts and Benchmark Item Composition**  
**All Students**

Description - Challenging intellectual and creative work is central to student learning and collegiate quality. Ten survey items address the nature and amount of assigned academic work, the complexity of cognitive tasks presented to students, and the standards faculty members use to evaluate student performance.

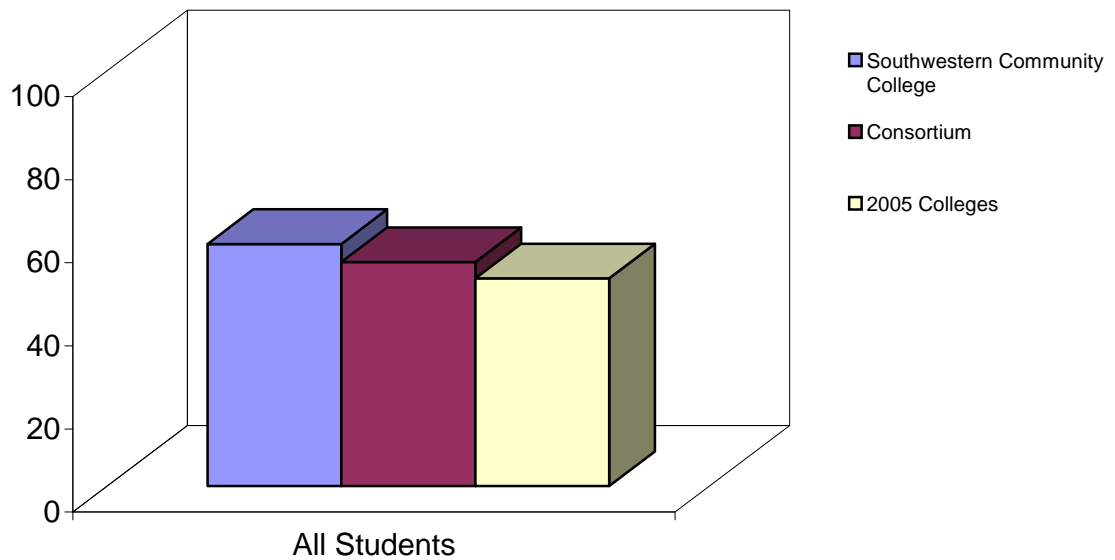


Benchmark Scores			
	Southwestern Community College	Consortium	2005 Colleges
All Students	53.6	51.5	50.0

Academic Challenge	
4p.	Worked harder than you thought you could to meet an instructor's standards or expectations
5b.	Analyzing the basic elements of an idea, experience, or theory
5c.	Synthesizing and organizing ideas, information, or experiences in new ways
5d.	Making judgments about the value or soundness of information, arguments, or methods
5e.	Applying theories or concepts to practical problems or in new situations
5f.	Using information you have read or heard to perform a new skill
6a.	Number of assigned textbooks, manuals, books, or book-length packs of course readings
6c.	Number of written papers or reports of any length
7	Mark the box that best represents the extent to which your examinations during the current school year have challenged you to do your best work at this college
9a.	Encouraging you to spend significant amounts of time studying

**Student-Faculty Interaction**  
**Bar Charts and Benchmark Item Composition**  
**All Students**

Description - In general, the more contact students have with their teachers, the more likely they are to learn effectively and persist toward achievement of their educational goals. Through such interactions, faculty members become role models, mentors, and guides for continuous, lifelong learning.

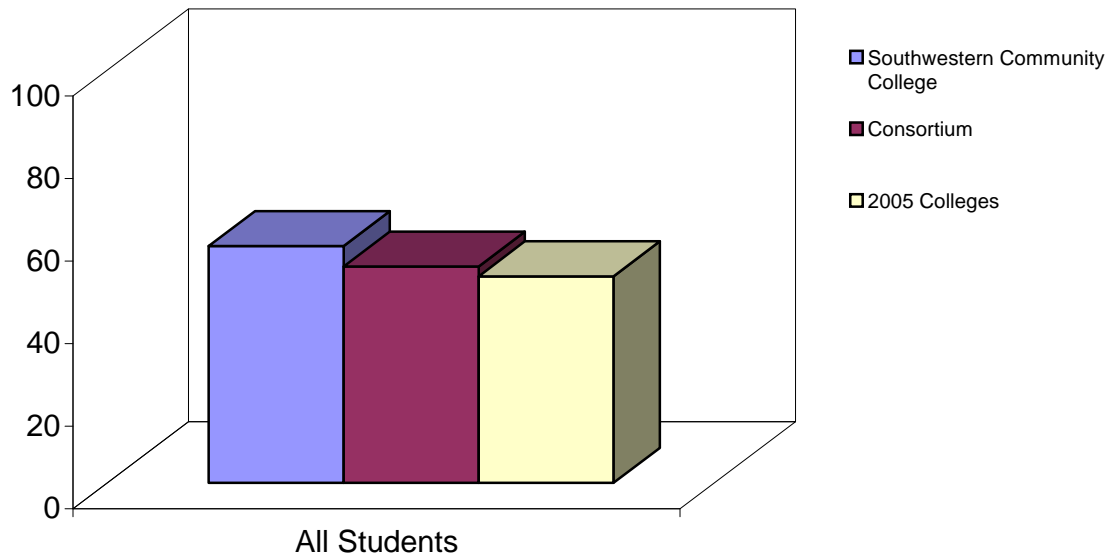


Benchmark Scores			
	Southwestern Community College	Consortium	2005 Colleges
All Students	58.3	53.9	50.0

Student-Faculty Interaction	
4k.	Used email to communicate with an instructor
4l.	Discussed grades or assignments with an instructor
4m.	Talked about career plans with an instructor or advisor
4n.	Discussed ideas from your readings or classes with instructors outside of class
4o.	Received prompt feedback (written or oral) from instructors on your performance
4q.	Worked with instructors on activities other than coursework

**Support for Learners**  
**Bar Charts and Benchmark Item Composition**  
**All Students**

Description - Students perform better and are more satisfied at colleges that are committed to their success and cultivate positive working and social relationships among different groups on campus.



Benchmark Scores			
	Southwestern Community College	Consortium	2005 Colleges
All Students	57.3	52.4	50.0

Support for Learners	
9b.	Providing the support you need to help you succeed at this college
9c.	Encouraging contact among students from different economic, social, and racial or ethnic backgrounds
9d.	Helping you cope with your non-academic responsibilities (work, family, etc.)
9e.	Providing the support you need to thrive socially
9f.	Providing the financial support you need to afford your education
13a.	Frequency: Academic advising/planning
13b.	Frequency: Career Counseling

# Community College Survey of Student Engagement 2005 Benchmark Report Southwestern Community College

Part-Time Students				
Benchmark	Southwestern Community College	Comparison Group Statistics		
			Consortium	2005 Colleges
Active and Collaborative Learning	50.3	Benchmark Score	48.6	45.9
		Score Difference	1.7	4.4
Student Effort	48.7	Benchmark Score	46.1	46.5
		Score Difference	2.5	2.2
Academic Challenge	45.2	Benchmark Score	46.5	46.1
		Score Difference	-1.3	-0.9
Student-Faculty Interaction	49.0	Benchmark Score	49.0	46.8
		Score Difference	-0.1	2.2
Support for Learners	52.9	Benchmark Score	49.3	48.2
		Score Difference	3.6	4.7
		Number of Colleges	11	257

Full-Time Students				
Benchmark	Southwestern Community College	Comparison Group Statistics		
			Consortuim	2005 Colleges
Active and Collaborative Learning	65.6	Benchmark Score	58.0	55.9
		Score Difference	7.5	9.7
Student Effort	62.5	Benchmark Score	57.5	55.8
		Score Difference	5.0	6.7
Academic Challenge	63.6	Benchmark Score	57.5	55.7
		Score Difference	6.0	7.9
Student-Faculty Interaction	69.4	Benchmark Score	59.7	56.4
		Score Difference	9.7	12.9
Support for Learners	62.6	Benchmark Score	56.0	54.2
		Score Difference	6.5	8.4
		Number of Colleges	11	257

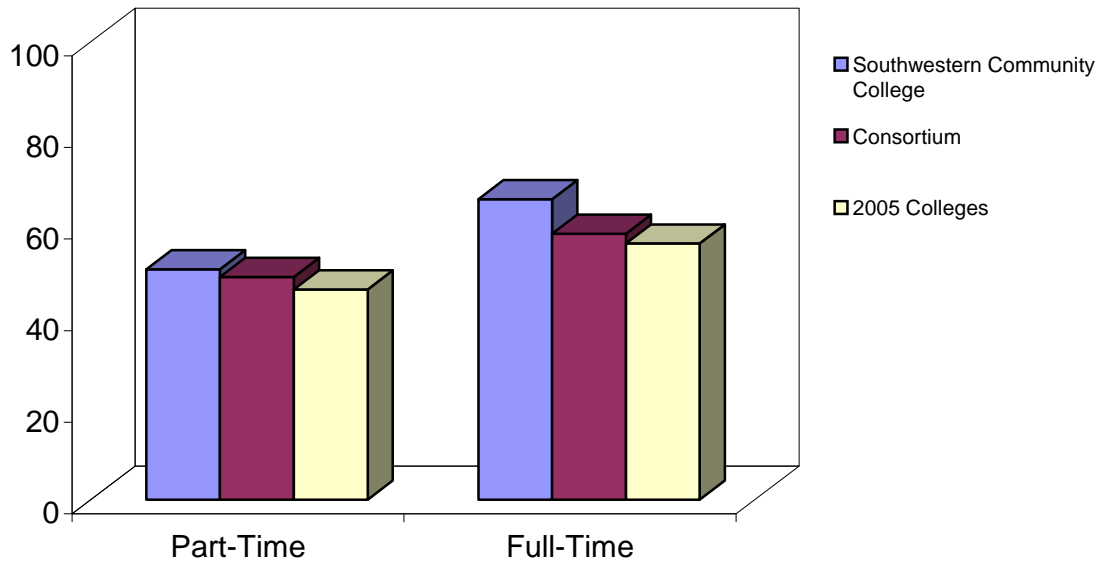
**Benchmark Score:** Each benchmark score was computed by averaging the scores on survey items that comprise that benchmark. To compensate for disproportionately large numbers of full-time students in the sample, all means used in the creation of the benchmarks are weighted by full- and part-time status. Benchmark scores are standardized so that the weighted mean across all students is 50 and the standard deviation across all participating students is 25. Institutions' benchmark scores are computed by taking the weighted average of their students' standardized scores.

**Score Difference:** The result of subtracting the comparison group score (same consortia colleges or 2005 colleges) from your college's score on each benchmark.



**Active and Collaborative Learning  
Bar Charts and Benchmark Item Composition  
Enrollment Status Breakout**

Description - Students learn more when they are actively involved in their education and have opportunities to think about and apply what they are learning in different settings. Through collaborating with others to solve problems or master challenging content, students develop valuable skills that prepare them to deal with the kinds of situations and problems they will encounter in the workplace, the community, and their personal lives.

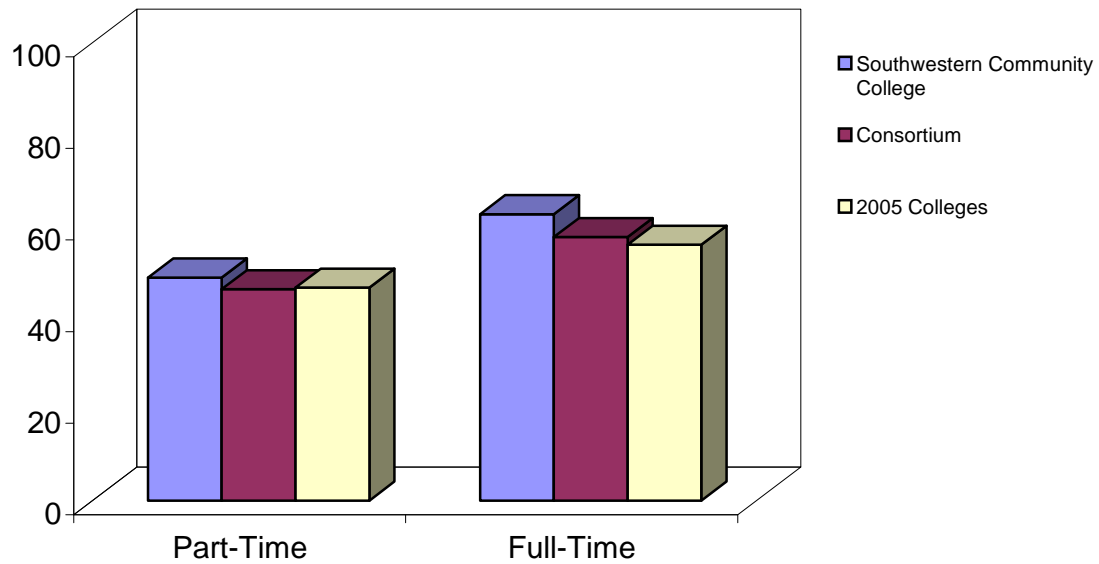


Benchmark Scores			
	Southwestern Community College	Consortium	2005 Colleges
<b>Part-Time</b>	50.3	48.6	45.9
<b>Full-Time</b>	65.6	58.0	55.9

Active and Collaborative Learning	
4a.	Asked questions in class or contributed to class discussions
4b.	Made a class presentation
4f.	Worked with other students on projects during class
4g.	Worked with classmates outside of class to prepare class assignments
4h.	Tutored or taught other students (paid or voluntary)
4i.	Participated in a community-based project as a part of a regular course
4r.	Discussed ideas from your readings or classes with others outside of class (students, family members, co-workers, etc.)

**Student Effort**  
**Bar Charts and Benchmark Item Composition**  
**Enrollment Status Breakout**

Description - Students' own behaviors contribute significantly to their learning and the likelihood that they will successfully attain their educational goals.

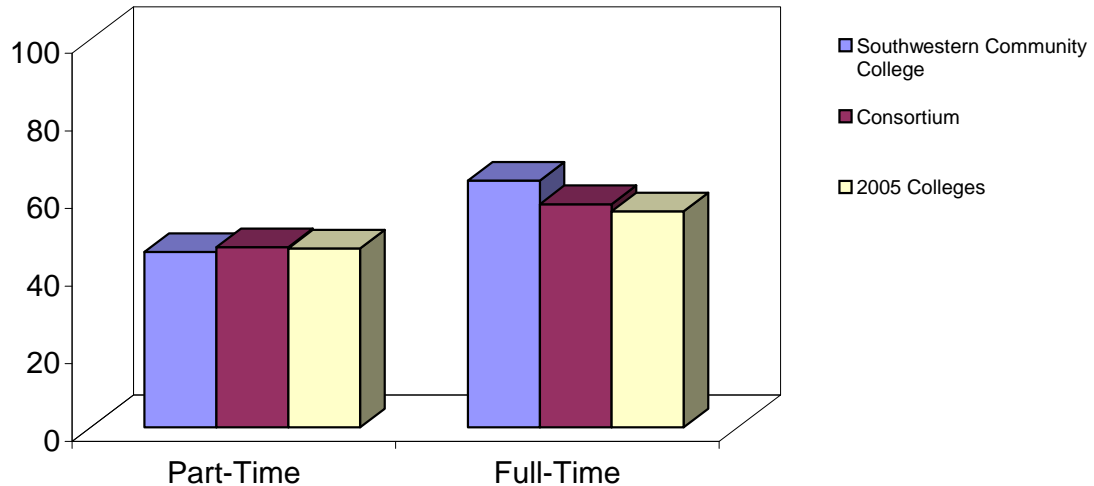


Benchmark Scores			
	Southwestern Community College	Consortium	2005 Colleges
Part-Time	48.7	46.1	46.5
Full-Time	62.5	57.5	55.8

Student Effort	
4c.	Prepared two or more drafts of a paper or assignment before turning it in
4d.	Worked on a paper or project that required integrating ideas or information from various sources
4e.	Come to class without completing readings or assignments
6b.	Number of books read on your own (not assigned) for personal enjoyment or academic enrichment
10a.	Preparing for class (studying, reading, writing, rehearsing, doing homework, or other activities related to your program)
13d.	Frequency of use: Peer or other tutoring
13e.	Frequency of use: Skill labs
13h.	Frequency of use: Computer lab

**Academic Challenge**  
**Bar Charts and Benchmark Item Composition**  
**Enrollment Status Breakout**

Description - Challenging intellectual and creative work is central to student learning and collegiate quality. Ten survey items address the nature and amount of assigned academic work, the complexity of cognitive tasks presented to students, and the standards faculty members use to evaluate student performance.



**Benchmark Scores**

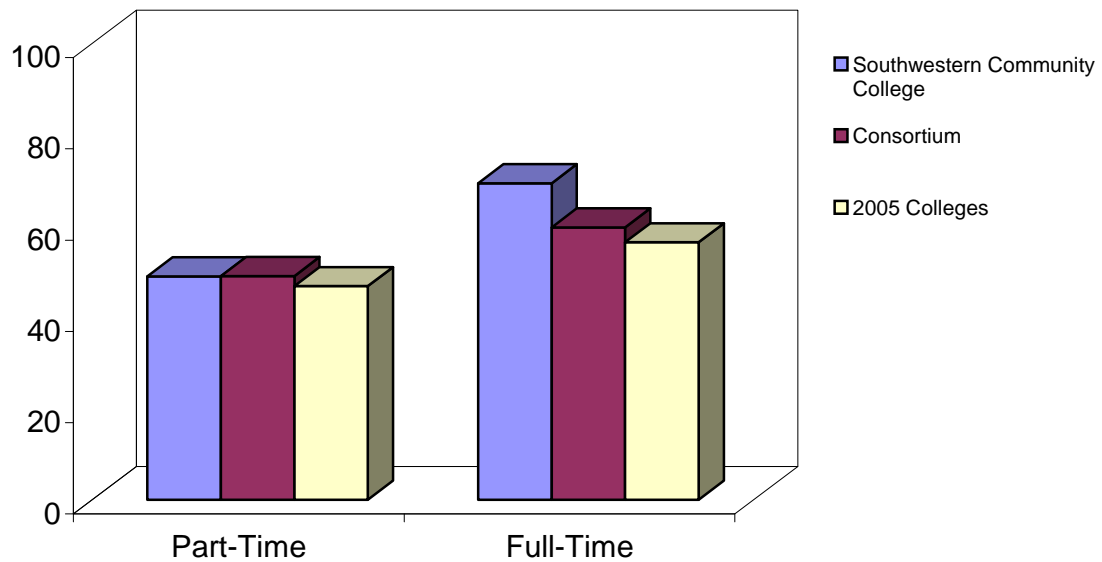
	Southwestern Community College	Consortium	2005 Colleges
<b>Part-Time</b>	45.2	46.5	46.1
<b>Full-Time</b>	63.6	57.5	55.7

**Academic Challenge**

- 4p. Worked harder than you thought you could to meet an instructor's standards or expectations
- 5b. Analyzing the basic elements of an idea, experience, or theory
- 5c. Synthesizing and organizing ideas, information, or experiences in new ways
- 5d. Making judgments about the value or soundness of information, arguments, or methods
- 5e. Applying theories or concepts to practical problems or in new situations
- 5f. Using information you have read or heard to perform a new skill
- 6a. Number of assigned textbooks, manuals, books, or book-length packs of course readings
- 6c. Number of written papers or reports of any length
- 7 Mark the box that best represents the extent to which your examinations during the current school year have challenged you to do your best work at this college
- 9a. Encouraging you to spend significant amounts of time studying

**Student-Faculty Interaction  
Bar Charts and Benchmark Item Composition  
Enrollment Status Breakout**

Description - In general, the more contact students have with their teachers, the more likely they are to learn effectively and persist toward achievement of their educational goals. Through such interactions, faculty members become role models, mentors, and guides for continuous, lifelong learning.

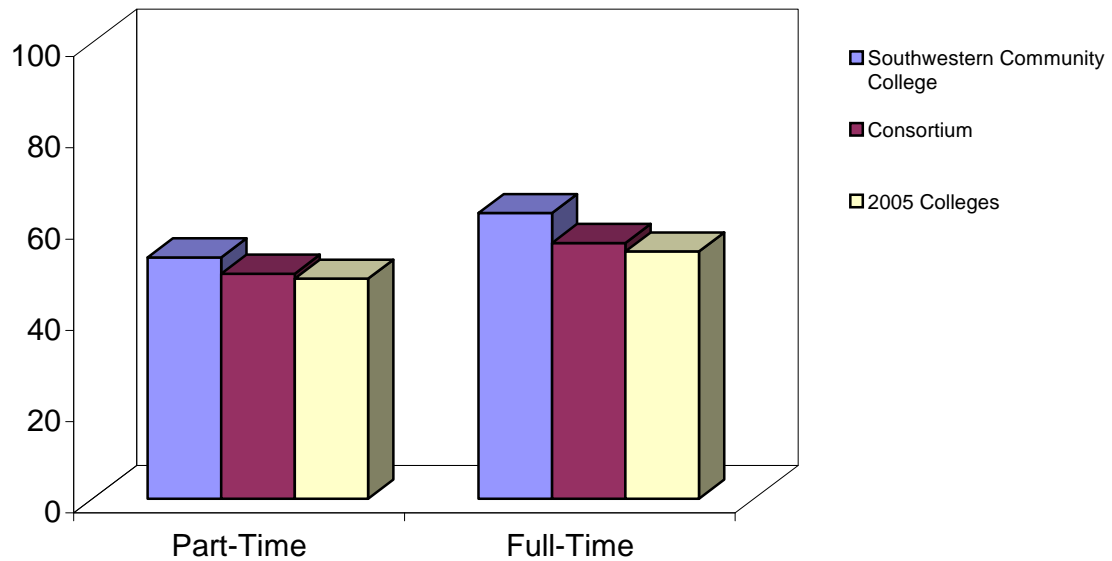


Benchmark Scores			
	Southwestern Community College	Consortium	2005 Colleges
Part-Time	49.0	49.0	46.8
Full-Time	69.4	59.7	56.4

Student-Faculty Interaction	
4k.	Used email to communicate with an instructor
4l.	Discussed grades or assignments with an instructor
4m.	Talked about career plans with an instructor or advisor
4n.	Discussed ideas from your readings or classes with instructors outside of class
4o.	Received prompt feedback (written or oral) from instructors on your performance
4q.	Worked with instructors on activities other than coursework

**Support for Learners**  
**Bar Charts and Benchmark Item Composition**  
**Enrollment Status Breakout**

Description - Students perform better and are more satisfied at colleges that are committed to their success and cultivate positive working and social relationships among different groups on campus.



Benchmark Scores			
	Southwestern Community College	Consortium	2005 Colleges
Part-Time	52.9	49.3	48.2
Full-Time	62.6	56.0	54.2

**Support for Learners**

- 9b. Providing the support you need to help you succeed at this college
- 9c. Encouraging contact among students from different economic, social, and racial or ethnic backgrounds
- 9d. Helping you cope with your non-academic responsibilities (work, family, etc.)
- 9e. Providing the support you need to thrive socially
- 9f. Providing the financial support you need to afford your education
- 13a. Frequency: Academic advising/planning
- 13b. Frequency: Career Counseling

# Community College Survey of Student Engagement 2005 Benchmark Report Southwestern Community College

0 to 29 Credits				
Benchmark	Southwestern Community College	Comparison Group Statistics		
			Consortium	2005 Colleges
Active and Collaborative Learning	55.1	Benchmark Score	50.8	47.5
		Score Difference	4.3	7.6
Student Effort	52.0	Benchmark Score	50.0	49.2
		Score Difference	1.9	2.8
Academic Challenge	52.1	Benchmark Score	50.1	48.2
		Score Difference	2.0	3.9
Student-Faculty Interaction	54.5	Benchmark Score	51.5	48.4
		Score Difference	3.0	6.1
Support for Learners	56.0	Benchmark Score	51.7	50.1
		Score Difference	4.3	5.9
		Number of Colleges	11	257

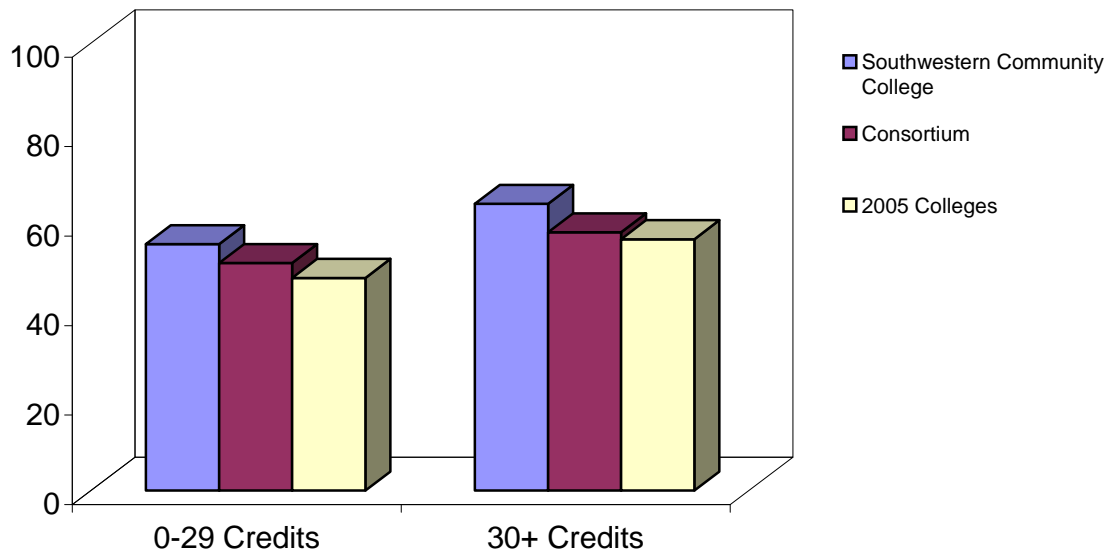
30+ Credits				
Benchmark	Southwestern Community College	Comparison Group Statistics		
			Consortium	2005 Colleges
Active and Collaborative Learning	64.1	Benchmark Score	57.7	56.2
		Score Difference	6.4	7.9
Student Effort	63.0	Benchmark Score	53.8	52.9
		Score Difference	9.2	10.1
Academic Challenge	58.6	Benchmark Score	54.6	54.6
		Score Difference	3.9	4.0
Student-Faculty Interaction	69.0	Benchmark Score	59.6	56.7
		Score Difference	9.4	12.3
Support for Learners	62.6	Benchmark Score	54.1	52.2
		Score Difference	8.4	10.4
		Number of Colleges	11	257

**Benchmark Score:** Each benchmark score was computed by averaging the scores on survey items that comprise that benchmark. To compensate for disproportionately large numbers of full-time students in the sample, all means used in the creation of the benchmarks are weighted by full- and part-time status. Benchmark scores are standardized so that the weighted mean across all students is 50 and the standard deviation across all participating students is 25. Institutions' benchmark scores are computed by taking the weighted average of their students' standardized scores.

**Score Difference:** The result of subtracting the comparison group score (same consortia colleges or 2005 colleges) from your college's score on each benchmark.

**Active and Collaborative Learning  
Bar Charts and Benchmark Item Composition  
Credit Hour Status Breakout**

Description - Students learn more when they are actively involved in their education and have opportunities to think about and apply what they are learning in different settings. Through collaborating with others to solve problems or master challenging content, students develop valuable skills that prepare them to deal with the kinds of situations and problems they will encounter in the workplace, the community, and their personal lives.



Benchmark Scores			
	Southwestern Community College	Consortium	2005 Colleges
<b>0-29 Credits</b>	55.1	50.8	47.5
<b>30+ Credits</b>	64.1	57.7	56.2

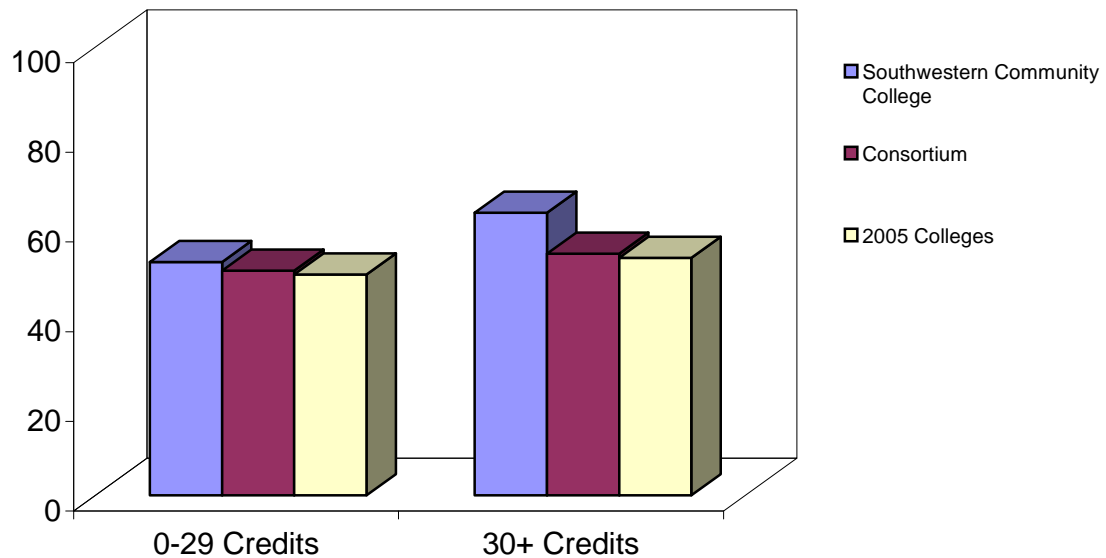
**Active and Collaborative Learning**

- 4a. Asked questions in class or contributed to class discussions
- 4b. Made a class presentation
- 4f. Worked with other students on projects during class
- 4g. Worked with classmates outside of class to prepare class assignments
- 4h. Tutored or taught other students (paid or voluntary)
- 4i. Participated in a community-based project as a part of a regular course
- 4r. Discussed ideas from your readings or classes with others outside of class (students, family members, co-workers, etc.)



**Student Effort**  
**Bar Charts and Benchmark Item Composition**  
**Credit Hour Status Breakout**

Description - Students' own behaviors contribute significantly to their learning and the likelihood that they will successfully attain their educational goals.

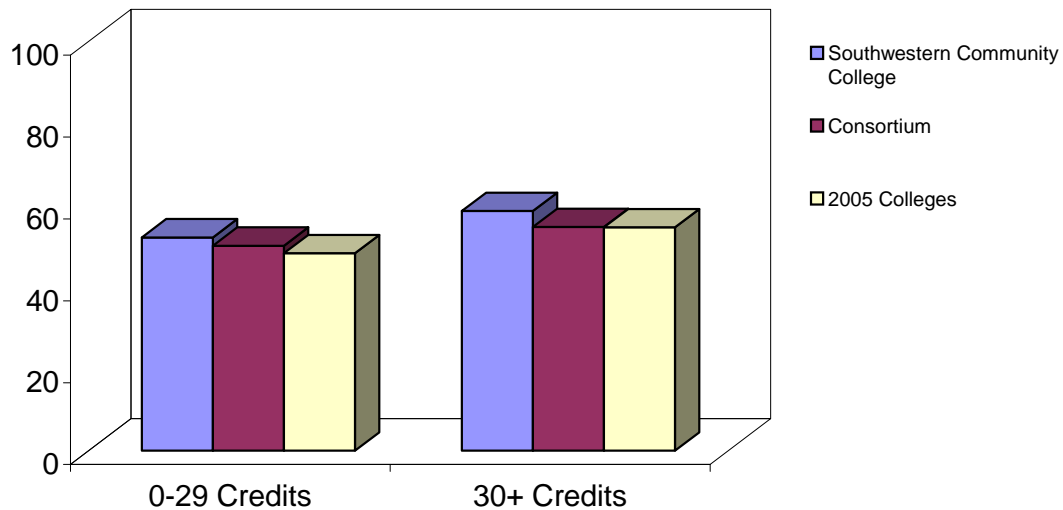


Benchmark Scores			
	Southwestern Community College	Consortium	2005 Colleges
0-29 Credits	52.0	50.0	49.2
30+ Credits	63.0	53.8	52.9

Student Effort	
4c.	Prepared two or more drafts of a paper or assignment before turning it in
4d.	Worked on a paper or project that required integrating ideas or information from various sources
4e.	Come to class without completing readings or assignments
6b.	Number of books read on your own (not assigned) for personal enjoyment or academic enrichment
10a.	Preparing for class (studying, reading, writing, rehearsing, doing homework, or other activities related to your program)
13d.	Frequency of use: Peer or other tutoring
13e.	Frequency of use: Skill labs
13h.	Frequency of use: Computer lab

**Academic Challenge**  
**Bar Charts and Benchmark Item Composition**  
**Credit Hour Status Breakout**

Description - Challenging intellectual and creative work is central to student learning and collegiate quality. Ten survey items address the nature and amount of assigned academic work, the complexity of cognitive tasks presented to students, and the standards faculty members use to evaluate student performance.



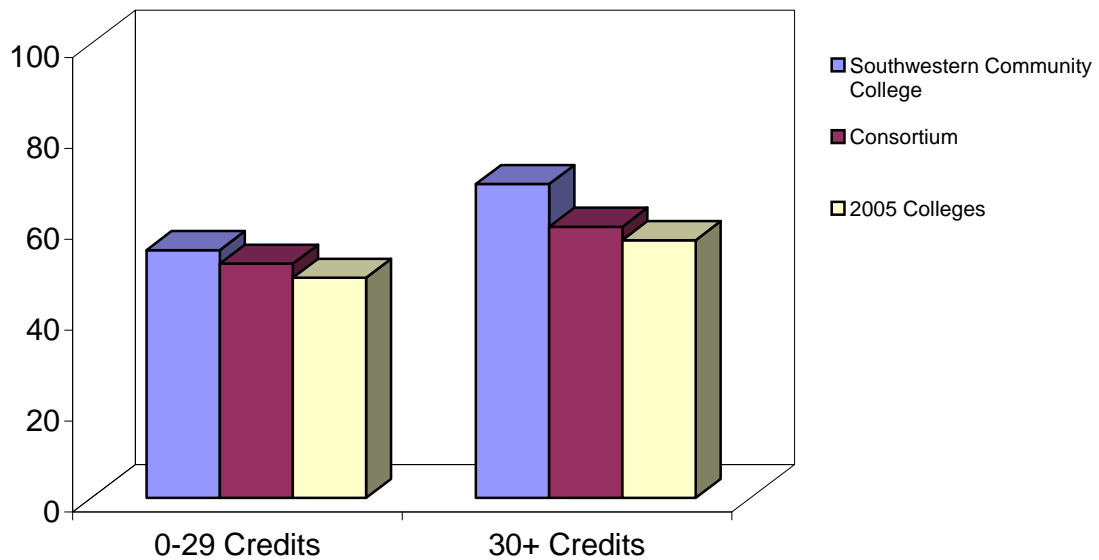
Benchmark Scores			
	Southwestern Community College	Consortium	2005 Colleges
<b>0-29 Credits</b>	52.1	50.1	48.2
<b>30+ Credits</b>	58.6	54.6	54.6

**Academic Challenge**

- 4p. Worked harder than you thought you could to meet an instructor's standards or expectations
- 5b. Analyzing the basic elements of an idea, experience, or theory
- 5c. Synthesizing and organizing ideas, information, or experiences in new ways
- 5d. Making judgments about the value or soundness of information, arguments, or methods
- 5e. Applying theories or concepts to practical problems or in new situations
- 5f. Using information you have read or heard to perform a new skill
- 6a. Number of assigned textbooks, manuals, books, or book-length packs of course readings
- 6c. Number of written papers or reports of any length
- 7 Mark the box that best represents the extent to which your examinations during the current school year have challenged you to do your best work at this college
- 9a. Encouraging you to spend significant amounts of time studying

**Student-Faculty Interaction**  
**Bar Charts and Benchmark Item Composition**  
**Credit Hour Status Breakout**

Description - In general, the more contact students have with their teachers, the more likely they are to learn effectively and persist toward achievement of their educational goals. Through such interactions, faculty members become role models, mentors, and guides for continuous, lifelong learning.



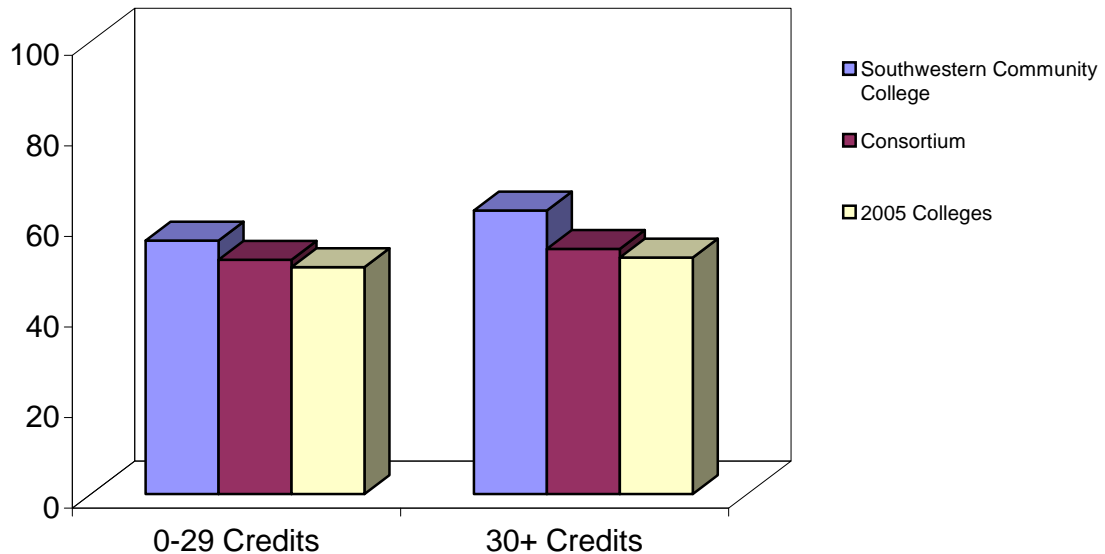
Benchmark Scores			
	Southwestern Community College	Consortium	2005 Colleges
0-29 Credits	54.5	51.5	48.4
30+ Credits	69.0	59.6	56.7

**Student-Faculty Interaction**

- 4k. Used email to communicate with an instructor
- 4l. Discussed grades or assignments with an instructor
- 4m. Talked about career plans with an instructor or advisor
- 4n. Discussed ideas from your readings or classes with instructors outside of class
- 4o. Received prompt feedback (written or oral) from instructors on your performance
- 4q. Worked with instructors on activities other than coursework

**Support for Learners**  
**Bar Charts and Benchmark Item Composition**  
**Credit Hour Status Breakout**

Description - Students perform better and are more satisfied at colleges that are committed to their success and cultivate positive working and social relationships among different groups on campus.



Benchmark Scores

	Southwestern Community College	Consortium	2005 Colleges
<b>0-29 Credits</b>	56.0	51.7	50.1
<b>30+ Credits</b>	62.6	54.1	52.2

**Support for Learners**

- 9b. Providing the support you need to help you succeed at this college
- 9c. Encouraging contact among students from different economic, social, and racial or ethnic backgrounds
- 9d. Helping you cope with your non-academic responsibilities (work, family, etc.)
- 9e. Providing the support you need to thrive socially
- 9f. Providing the financial support you need to afford your education
- 13a. Frequency: Academic advising/planning
- 13b. Frequency: Career Counseling

BMARK

group	IPEDS	_FREQ_	acchall	support	stufac	stueff	actcoll	institution	location
all	19973100	424	53.59768	57.32727	58.2803	54.97315	57.24757	Southwestern Community College	Rural
credit1	19973100	293	52.09928	55.99577	54.51309	51.97335	55.06773	Southwestern Community College	Rural
credit2	19973100	123	58.55085	62.59193	69.01996	63.00343	64.05352	Southwestern Community College	Rural
enrlment1	19973100	121	45.18327	52.88863	48.95501	48.6523	50.25863	Southwestern Community College	Rural
enrlment2	19973100	303	63.5981	62.57627	69.36329	62.48541	65.55384	Southwestern Community College	Rural
all	19973100	11	51.48596	52.3819	53.9049	51.27942	52.94536	Southwestern Community College	Rural
all	19973100	96	49.67577	51.7928	51.76815	50.4402	50.62477	Southwestern Community College	Rural
all	19973100	111	50.1522	52.14823	52.01475	50.97001	50.87274	Southwestern Community College	Rural
credit1	19973100	218	48.23551	50.09855	48.40378	49.21083	47.49235	Southwestern Community College	Rural
credit1	19973100	11	50.08979	51.70671	51.50472	50.0433	50.80014	Southwestern Community College	Rural
credit1	19973100	96	47.44267	50.9006	48.90773	49.19511	47.72451	Southwestern Community College	Rural
credit1	19973100	111	48.19502	51.38052	49.32791	49.87044	48.05278	Southwestern Community College	Rural
credit2	19973100	218	54.56082	52.19984	56.69313	52.89471	56.15175	Southwestern Community College	Rural
credit2	19973100	11	54.64179	54.14905	59.64201	53.84333	57.68661	Southwestern Community College	Rural
credit2	19973100	96	54.54317	53.82137	58.07493	53.05391	56.61255	Southwestern Community College	Rural
credit2	19973100	111	54.88436	53.98296	58.44416	53.58416	57.23223	Southwestern Community College	Rural
enrlment1	19973100	218	46.11422	48.20336	46.80207	46.46438	45.86667	Southwestern Community College	Rural
enrlment1	19973100	11	46.45896	49.29276	49.01656	46.12858	48.58547	Southwestern Community College	Rural
enrlment1	19973100	96	45.08403	48.65277	46.86884	46.03735	45.59024	Southwestern Community College	Rural
enrlment1	19973100	111	45.67421	49.1638	47.43904	46.66451	46.10282	Southwestern Community College	Rural
enrlment2	19973100	218	55.67182	54.17751	56.41669	55.83426	55.89613	Southwestern Community College	Rural
enrlment2	19973100	11	57.54866	56.03059	59.66343	57.50042	58.04551	Southwestern Community College	Rural
enrlment2	19973100	96	55.16413	55.6461	57.60285	55.80073	56.38383	Southwestern Community College	Rural
enrlment2	19973100	111	55.68591	55.72993	57.52899	56.28041	56.47648	Southwestern Community College	Rural

# BMARK

Size	igroup	consortium	Lookup
Small	school	Carolina	all 19973100school
Small	school	Carolina	credit1 19973100school
Small	school	Carolina	credit2 19973100school
Small	school	Carolina	enrlment1 19973100school
Small	school	Carolina	enrlment2 19973100school
Small	Carolina	Carolina	all 19973100Carolina
Small	Rural	Carolina	all 19973100Rural
Small	Small	Carolina	all 19973100Small
Small	All_Schools	Carolina	credit1 19973100All_Schools
Small	Carolina	Carolina	credit1 19973100Carolina
Small	Rural	Carolina	credit1 19973100Rural
Small	Small	Carolina	credit1 19973100Small
Small	All_Schools	Carolina	credit2 19973100All_Schools
Small	Carolina	Carolina	credit2 19973100Carolina
Small	Rural	Carolina	credit2 19973100Rural
Small	Small	Carolina	credit2 19973100Small
Small	All_Schools	Carolina	enrlment1 19973100All_Schools
Small	Carolina	Carolina	enrlment1 19973100Carolina
Small	Rural	Carolina	enrlment1 19973100Rural
Small	Small	Carolina	enrlment1 19973100Small
Small	All_Schools	Carolina	enrlment2 19973100All_Schools
Small	Carolina	Carolina	enrlment2 19973100Carolina
Small	Rural	Carolina	enrlment2 19973100Rural
Small	Small	Carolina	enrlment2 19973100Small